



Mustang

Index

A/C Discharge Hoses	36	Front Frame Rails	32	Quarter Window Crank Handles	49
Antenna Assemblies	31	Front Frame Rails and Supports	32	Radiator Core Supports	35
Armrest Bases	64, 65	Front Spring Seats and Suspension Components	65	Radiator Fan Shrouds and Brackets	37
Armrest Pads	64, 65	Front Stone Deflectors	30	Rear Crossmembers and Braces	54
Back-Up Lamp Assemblies	55	Full Floor Pan Patches	44	Rear Frame Rails	54
Battery Trays and Hardware	37	Gas Caps	53	Rear Spoilers	51
Bucket Seat Parts	64	Gas Filler Necks	53	Rear Trunk Corners	51
Bumper Brackets	24	Gas Tanks	53	Rear Upper Torque Boxes	54
Bumper Guards and Hardware	24	Gas Tank Sending Units	53	Rear Valance Panels	56
Bumper Mounting Hardware Kits	23	Gas Tank Straps and Mounting Hardware	52	Rear Wheelhouse Assemblies and Parts	50
Bumpers, Chrome	23	Glass Guide Tubes	41	Rear Window Reveal Moldings	46
Chrome Bumpers	23	Grille Bars	26	Rocker Panels	42
Clock and Trip Odometer Knobs	60	Grille Emblems	27	Rubber Grommet Kits	44
Clutch Parts	65	Grille Moldings	26	Seat Platforms	45
Console Parts	62	Grilles	25, 30	Shock Access Plugs	51
Convertible Windshield Pillar Post Weatherstrips	67, 68	Grille Support Braces	26	Shock Tower Assemblies	32
Courtesy Lamps	61	Headlamp Assemblies and Parts	28	Shock Tower Covers	32
Courtesy Lamp Switch (Door Jamb)	39, 57	Headlamp Panel Inner Brackets	27	Shock Tower to Firewall Braces	31
Cowl Panel Patches	37	Headlight Switches and Bezels	59	Shock Tower Top Caps	32
Cowl Side Panels	38	Heater / Defroster Plenums	38	Spare Tire Hold-Down Set	52
Deck Filler Panels	51	Heater and A/C Controls	60	Steering Column Seals	66
Deck Well Moldings	51	Hood Adjustment Bumpers	34	Steering Wheels and Parts	61
Door Bumper Kits	39	Hood Bumpers	34	Stone Deflectors	30
Door Edge Guard Moldings	39	Hood Front Moldings	33	Tail Lamp Parts	54
Door Glass Assemblies	39, 57	Hood Hinges	34	Tail Panels	55, 56
Door Glass Guide Tubes	41	Hood Hinge Springs	34	Throttle Cables	35
Door Handle Remote Controls	42	Hood Insulation	33	Throttle Linkage Rods	35
Door Handles, Inside	41, 42	Hood Latch Assembly	34	Torque Boxes, Front	45
Door Handles, Outside	41	Hood Latch Support Braces	34	Transmission Kickdown Cables	35
Door Hinge Repair Kits	39	Hoods	33	Trunk Braces	52
Door Hinges	38	Hoods, Steel Cowl Induction	68	Trunk Corners	51
Door Jamb "U"-Seals	67, 68	Hood Scoop Inserts	33, 34	Trunk Floors	52
Door Latches	42	Hood Scoops	33, 34	Trunk Floor Side Panels and Drop-Offs	52
Door Latch Rod Sets	42	Ignition Switches and Bezels	59	Trunk Lid Emblems	51
Door Lock Knob Ferrules	42	Inner Fender Aprons	32	Trunk Lid Hinges	51
Door Lock Knobs and Ferrules	42	Inner Quarter Panels	48	Trunk Lid Moldings	52
Door Lock Strikers	48	Inside Door Handles	41, 42	Trunk Lids	50
Door Window Crank Handles	41	Inside Rear View Mirrors and Brackets	65	Turn Signal Levers	62
Door Window Regulators	40	Instrument Panel Bezels	58	Underhood Electrical Parts	36
Drip Rail Molding Sets	46	Kick Panels (Interior)	57	Under Rear Seat Floor Pan Patches	44
Exhaust Manifold Heat Risers and Locks	35	License Lamp Assemblies	25	Valance Panels, Front	30
Exhaust Tips and Moldings	56	License Plate Brackets	25	Vent Window Parts	40
Export Braces	37	Luggage Racks	51	Vent Window Weatherstripping	66
Fan Shrouds and Brackets	37	Mirrors, Outside Rear View	39	Vinyl Top Molding Sets	46
Fender Aprons	32	Monte Carlo Bars	37	Wheel Opening Molding Sets	43
Fender Emblems	31	Oil Pans	36	Window Crank Handles, Door	41
Fender Eyebrow Moldings	30	Outer Shock Tower Covers	32	Windowfelt Kits	66
Fender Patches	31	Outside Door Handles	41	Window Regulators, Door	40
Fenders, Front	30	Park Brake Handles	60	Windshield Header Moldings	45
Fender Splash Shields	31	Park Lamp Assemblies and Parts	29	Windshield Wiper Parts	35, 36
Fender to Cowl Mounting Pads	30	Partial Floor Pan Patches	44	Wiper Switches and Bezels	59
Firewall Patch Panels	37	Pedals, Pads, and Trim	63, 64		
Floor Pan Assemblies	43	Quarter Glass Weatherstrips	68		
Floor Pan Drain Plugs	44	Quarter Panel Drain Plugs	67		
Floor Pan Patches, Partial	44	Quarter Panel Ornaments	48		
Floor Reinforcement Panels	45	Quarter Panel Patches	47		
Floor to Firewall Extensions	44	Quarter Panel Rear Extensions	48		
Fog Lamp Parts	27	Quarter Panels	47		
Fold Down Seat Hardware	63	Quarter Panel Skins	47		
Front Crossmembers	35	Quarter Window Assemblies	49		

1 Cougar



MUSTANG AND COUGAR

Goodmark knows how much fun owning a sporty car can be...which is why we decided to service Mustang owners with the best quality sheetmetal and trim money can buy. We sort through thousands of parts available on the market to bring you the best available anywhere...at an affordable price.



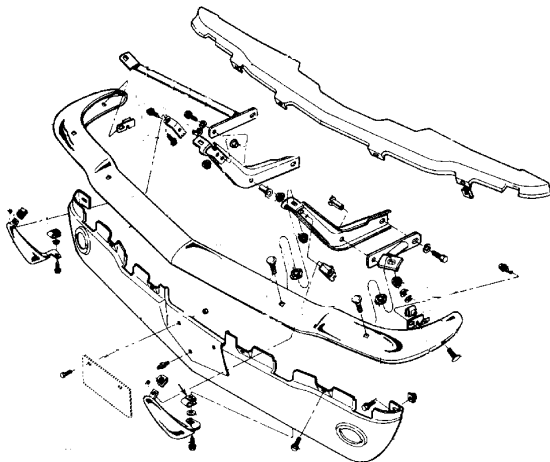
FRONT AND REAR BUMPERS

These Premium Quality Bumpers are new, die-stamped, high quality steel, triple plated, and fit perfectly. The show-quality plating process of copper/ nickel/ chrome meets original factory standards. Get a set of these excellent bumpers for your car, and show them off to the world.

Chrome Bumpers

Our bumpers are new die-stamped steel, triple plated chrome, and excellent fit. Holes for bumper guards or pads are not drilled, and will need to be added if required. Be sure to order new mounting hardware to give your car a clean detailed look.

64-66 .. Mustang Front	3020-000-64	\$109.95 ea	
64-66 .. Mustang Rear	3020-800-64	\$109.95 ea	
67-68 .. Mustang Front	3021-000-67	\$109.95 ea	
67-68 .. Mustang Rear	3021-800-67	\$109.95 ea	
69-70 .. Mustang Front (except Shelby)	3022-000-69	\$109.95 ea	
69-70 .. Mustang Rear	3022-800-69	\$109.95 ea	
71-72 .. Mustang Front (except rubberized) ...	3023-000-711	\$109.95 ea	
71-73 .. Mustang Rear (w/o holes for guards) ...	3023-800-71	\$109.95 ea	



Bumper Mounting Hardware Kits

All the hardware you need to install your front and rear bumper face bars, and all mounting brackets. This hardware is not included with our Master Body Hardware Kits and must be ordered separately. This is not generic hardware - all fasteners have the correct markings and finish and are concours correct. Don't settle for the cheap stuff when the right stuff is so affordable!



64-66 .. Mustang (inc. Shelby) (66 pieces)	3020-001-641S	\$39.95 kit
67 .. Mustang (inc. Shelby) (64 pieces)	3021-001-671S	\$39.95 kit
68 .. Mustang (inc. Shelby) (64 pieces)	3021-001-681S	\$39.95 kit



69 .. Mustang (exc. Shelby) (54 pieces)	3022-001-691S	\$59.95 kit
69-70 .. Shelby Mustang (36 pieces)	3022-001-692S	\$59.95 kit
70 .. Mustang (exc. Shelby) (50 pieces)	3022-001-701S	\$59.95 kit



71-72 .. Mustang (66 pieces)	3023-001-711S	\$59.95 kit
73 .. Mustang (58 pieces)	3023-001-731S	\$59.95 kit



67-68 .. Cougar (64 pieces)	3321-001-671S	\$39.95 kit
69 .. Cougar (48 pieces)	3322-001-691S	\$49.95 kit
70 .. Cougar (44 pieces)	3322-001-701S	\$49.95 kit



Mustang

Bumper Brackets

New EDP coated steel brackets mount front or rear bumpers. Always a good idea to use when replacing new bumpers and essential if the vehicle has had collision damage. Helps to properly align new bumpers.



- 64-66 .. Mustang Front Inner Left / Right3020-005-64L / R ... \$10.95 ea
- 64-66 .. Mustang Front Outer Left / Right3020-010-64L / R ... \$9.95 ea
- 64-66 .. Mustang Front Bumper to Fender,
..... Left / Right.....3020-011-64L / R \$2.95 ea
- 64-66 .. Mustang Rear (use 2)3020-890-64 \$9.95 ea
- 64-73 .. Mustang Rear Bumper Mount Pad Set (cushions bumper to bracket)
..... Set of 43020-807-641S..... \$4.95 set



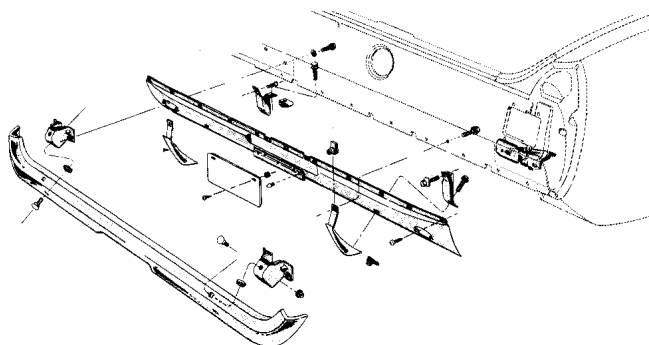
- 67-68 .. Mustang Front Inner Left / Right3021-005-67L / R ... \$10.95 ea
- 67-68 .. Mustang Front Outer Left / Right3021-010-67L / R ... \$9.95 ea
- 67-68 .. Mustang Front Bumper to Fender,
..... Left / Right.....3021-011-67L / R \$2.95 ea
- 67-68 .. Mustang Rear (use 2)3021-890-67 \$9.95 ea



- 69-70 .. Mustang (exc. Shelby) Front Inner,
..... Left / Right.....3022-005-69L / R ... \$19.95 ea
- 69-70 .. Mustang (exc. Shelby) Front Outer,
..... Left / Right.....3022-010-69L / R ... \$12.95 ea
- 69-70 .. Mustang Front Bumper to Fender,
..... (use 2).....3022-011-69 \$3.95 ea
- 69-70 .. Mustang Rear (use 2)3022-890-69 \$9.95 ea



- 71-73 .. Mustang Front Inner, Left / Right3023-005-71L / R ... \$19.95 ea
- 71-72 .. Mustang Rear, Left / Right3023-890-71L / R ... \$19.95 ea



Bumper Guards and Hardware

New chrome die-cast guards are excellent additions to a new bumper installation. Guards are sold in pairs for your convenience. Mounting hardware is NOT included but is included in a Master Body Hardware Kit or available separately.



- 64-66 .. Mustang Front Bumper Guards
..... Chrome Guards, left / right pair.....3020-015-64P \$32.95 pr
- Front Bracket (use 2)3020-017-64 \$4.95 ea
- Front Hardware Mount Kit (14 pieces)
.....3020-015-641S..... \$14.95 kit
- Front Guard Cushion Set (4 pieces) 3020-015-642S..... \$5.95 kit
- 64-66 .. Mustang Rear Bumper Guards
..... Chrome Guards, left / right pair.....3020-895-64P \$34.95 pr
- Rear Hardware Mount Kit (8 pieces) 3020-895-641S..... \$19.95 kit
- Rear Mount Brackets, left / right pair 3020-897-64P..... \$29.95 pr
- Rear Bracket Hardware Kit (8 pieces)
.....3020-897-641S..... \$9.95 kit
- 64-66 .. Mustang Bumper Guard Cushion Set (cushions between bumper guards
and bumper) (set of 4)3020-015-642S..... \$5.95 set



- 67-67 .. Mustang Front Bumper Guards
..... '67 Chrome Guards(w/ pad holes) (before 5/67),
..... Left / Right.....3021-015-672L / R ... \$19.95 ea
- '67 Guard Hardware Kit (8 pieces) ..3021-015-671S..... \$10.95 kit
- '67 Front Cushion (before 5/67) ...3021-016-67 \$6.95 ea
- Chrome Guards (w/o pad holes) (from 5/67)
..... (LH / RH pair)3021-015-671P..... \$34.95 pr
- Guard Hardware Kit (8 pieces)3021-015-672S..... \$10.95 kit
- 67-68 .. Mustang Rear Bumper Guards
..... Chrome Guards (w/ pad holes)
..... (LH / RH pair)3021-895-67P..... \$34.95 pr
- Rear Guard Hardware Kit (8 pcs) ..3021-895-671S..... \$10.95 kit
- Rear Cushion (use 2)3021-896-67 \$6.95 ea
- Rear Cushion Hardware Kit (6 pcs) ..3021-896-671S..... \$3.95 kit
- Rear Mount Brackets (LH / RH pair) 3021-897-67P..... \$29.95 pr
- Rear Bracket Hardware Kit (8 pcs) ..3021-897-671S..... \$9.95 kit

1 Cougar



License Lamp Assemblies

New complete license lamp assemblies include the housing, lens, and wiring pigtail in a complete assembly ready for installation. Why try to restore your faded, discolored, and corroded original when these items are so inexpensive to replace?



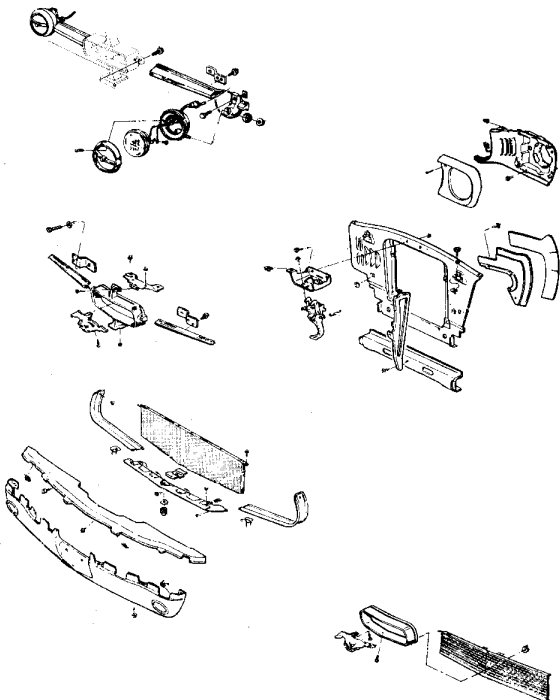
64-66 . . Mustang	3020-886-64S	\$29.95 ea
67-68 . . Mustang	3021-886-67S	\$29.95 ea
71-73 . . Mustang	3023-886-71S	\$29.95 ea

Front License Plate Brackets

New EDP coated brackets mount a front license tag. Installation hardware is included in our Master Body Hardware Kits.



69-70 . . Mustang (exc. Shelby) Front License Bracket	3022-040-69	\$14.95 ea
71-72 . . Mustang Front License Bracket	3023-040-71	\$17.95 ea
73 Mustang Front License Bracket	3023-040-73	\$17.95 ea
64-66 . . Mustang License Plate Bumpers (Front & Rear)	3020-040-641S	\$6.95 set
67-68 . . Mustang License Plate Bumpers (Front & Rear)	3021-040-671S	\$6.95 set
69-70 . . Mustang License Plate Bumpers (Rear)	3022-885-691S	\$6.95 pr
64-68 . . Mustang License Plate Hardware (Front & Rear)	3020-040-642S	\$6.95 set
69-73 . . Mustang License Plate Hardware (Front & Rear)	3022-040-691S	\$6.95 set



GRILLES AND FRONT LAMPS



Front Grilles

New reproduction grilles and grille moldings for popular models. Be sure to order new moldings for a complete grille overhaul. Hardware is available in our Master Body Hardware Kits.

64-66 . . Mustang Lower Grille Support	3020-045-64	\$34.95 ea
64-65 . . Mustang (exc. GT) Grille (w/o fog lamps)	3020-050-64	\$89.95 ea
65 Mustang GT Grille (w/ fog lamps)	3020-050-65	\$89.95 ea
66 Mustang Grille	3020-050-66	\$109.95 ea
67 Mustang Grille (exc. Shelby)	3021-050-67	\$89.95 ea
68 Mustang Grille (exc. Shelby) (w/o fog lamps)	3021-050-681	\$119.95 ea
69 Mustang Grille (exc. Shelby) (w/o chrome frame) (black plastic)	3022-050-691	\$79.95 ea
70 Mustang Grille (exc. Shelby or Mach 1)	3022-050-701	\$199.95 ea
70 Mustang Grille (Mach 1)	3022-050-702	\$199.95 ea
71-72 . . Mustang Grille (except Mach 1)	3023-050-711	\$269.95 ea
71-72 . . Mustang Grille (Mach 1)	3023-050-712	\$349.95 ea
73 Mustang Grille (except Mach 1)	3023-050-731	\$249.95 ea
73 Mustang Grille (Mach 1)	3023-050-732	\$199.95 ea



Mustang

Grille Support Braces

EDP coated steel brace that supports the grille assembly.



- 69 Mustang (except Shelby)3022-053-69 \$89.95 ea
- 70 Mustang (except Shelby)3022-053-70 \$89.95 ea

Grille Moldings

New reproduction moldings that trim the grille or grille opening. These are not included with grilles, but are available separately. Hardware is included with each molding or is listed separately here.



- 64-66 . . Mustang Grille Panel Left / Right (with hardware)
3020-055-64L / R \$19.95 ea
- 66 Mustang Center Panel Joint w/ nut3020-055-66 \$14.95 ea



- 67-68 . . Mustang
 Grille Panel Left / Right (with hardware)
3021-056-67L / R \$34.95 ea
- Center Panel Joint w/ hardware3021-055-671 \$9.95 ea
- Grille Panel Molding Left / Right
 (with hardware)3021-055-67L / R \$12.95 ea



- 68 Mustang Grille Molding (Large Ring)3021-055-681 \$229.95 ea



- 69 Mustang (exc. Shelby) Outer Grille Panel Left / Right
 (with hardware)3022-056-69L / R \$39.95 ea
- Center Grille Panel (w/o hardware)3022-056-691 \$69.95 ea
- Center Grille Panel Hardware Kit (8 pieces)
3022-056-691S \$6.95 kit
- Panel Molding, Left / Right (with hardware)
3022-055-69L / R \$39.95 ea
- Center Molding (with hardware)3022-055-691 \$14.95 ea



- 70 Mustang (exc. Shelby)
 Center Grille Panel3022-056-701 \$79.95 ea
- Hardware Kit (22 pieces)3022-056-701S \$14.95 kit
- Headlamp Moldings, Left / Right3022-115-70L / R \$109.95 ea
- Hardware Kit (8 pieces)3022-115-701S \$6.95 kit

Grille Moldings (continued)



- 71-72 . . Mustang Upper or Lower Grille Molding 3023-055-711 \$39.95 ea
- Grille Molding, Left / Right3023-055-71L / R \$39.95 ea



- 73 Mustang Upper or Lower Grille Molding 3023-055-731 \$34.95 ea
- Grille Molding, Left / Right3023-055-73L / R \$34.95 ea

Grille Bars

Chrome die-cast bars that fit in the grille opening and can also support the fog lamps if required.



- 64-65 . . Mustang (exc. GT) (w/o fog lamp) Grille Bar,
 Left / Right3020-055-641L / R \$24.95 ea
- Grille Bar Hardware Kit (10 pieces)3020-055-641S \$6.95 kit
- Grille Bar Mount Brackets (pair)3020-055-642P \$6.95 pr
- 67 Mustang (exc. GT) (w/o fog lamp) Grille Bar,
 Left / Right pair3021-055-672P \$149.95 pr
- Grille Bar Hardware Kit (10 pieces)3021-055-673S \$17.95 kit



- 65 Mustang GT (w/ fog lamps)
 Grill Bars, LH / RH pair3020-055-65P \$99.95 pr
- Bar Mount Brackets, LH / RH pair3020-055-651P \$29.95 pr
- 66 Mustang GT (w/ fog lamps)
 Grille Bars, LH / RH pair3020-055-66P \$99.95 pr
- Bar Mount Brackets, LH / RH pair3020-055-661P \$29.95 pr



- 67 Mustang GT (w/ fog lamps)
 Grille Bars, LH / RH pair3021-055-673P \$99.95 pr
- Bar Mount Brackets, LH / RH pair3021-055-671P \$29.95 pr
- 68 Mustang GT (w/ fog lamps)
 Bar Mount Brackets, LH / RH pair3021-055-681P \$34.95 pr

Fog Lamp Parts

New reproduction fog lamp assemblies make a great addition to any Mustang. Assembly includes housing, bezel, and wire pigtail.



- 65-68 . . Mustang GT with round Fog Lamps
- '65-67 Fog Lamp Housing Assembly (use 2)
- 3020-066-651S \$34.95 ea
- '68 Fog Lamp Housing Assembly (use 2)
- 3021-066-681S \$49.95 ea
- Bulb, Clear, with correct script 3020-066-655 \$17.95 ea



- Bezel only (use 2) 3020-066-652 \$19.95 ea
 - Bezel Hardware Kit (4 pieces) 3020-066-652S \$6.95 kit
 - '65-67 Wire Pigtail (use 2) 3020-066-653 \$9.95 ea
 - '68 Wire Pigtail (use 2) 3021-066-684 \$17.95 ea
- NOTE: Bezels and Wire Pigtails are included in Assemblies.*

- 65-67 . . Mustang GT Fog Lamp Mount Hardware Kit
- '65 (4 pieces) 3020-066-654S \$6.95 kit
- '66 (16 pieces) 3020-066-661S \$12.95 kit
- '67 (6 pieces) 3021-066-671S \$9.95 kit



- 65 Mustang GT Fog Lamp Switch 3020-066-656 \$39.95 ea
- 66 Mustang GT Fog Lamp Switch 3020-066-662 \$39.95 ea
- 67 Mustang GT Fog Lamp Switch 3021-066-672 \$39.95 ea
- 68 Mustang GT Fog Lamp Switch 3021-066-682 \$54.95 ea



- 65 Fog Lamp Wiring Kit 3020-066-657S \$59.95 kit
- 66-67 . . Fog Lamp Wiring Kit 3020-066-663S \$59.95 kit
- 68 Fog Lamp Wiring Kit 3021-066-683S \$59.95 kit



- 70 Mustang Mach 1 Sport Lamp
- Lenses (pair) 3322-070-691P \$49.95 pr
- Lens Gaskets (pair) 3322-072-69P \$4.95 pr
- Bezels, Left / Right pair 3022-076-70P \$69.95 pr
- 71-72 . . Mustang Sport Lamp Assembly (use 2) 3023-066-71S \$39.95 ea

Grille Emblems

Die-cast, chromed and painted emblems for various models. Excellent quality.



- 64-65 . . Mustang (exc. Shelby)
- Grille Corral and Horse 3020-058-641S \$109.95 ea
- Hood Top Latch Plate (Emblem Retainer)
- 3020-057-64 \$5.95 ea
- 65 Shelby GT-350 Grille Emblem 3020-130-642L \$9.95 ea
- 66 Mustang Grille Corral and Horse
- without fog lamps 3020-058-661S \$109.95 ea
- with fog lamps (GT) 3020-058-662S \$119.95 ea
- 66 Shelby GT-350 Grille Emblem 3020-058-663S \$24.95 ea



- 67 Mustang (exc. Shelby) Grille Corral and Horse
- 3021-058-671S \$199.95 ea
- 67 Shelby GT-350 Grille / Dash / Trunk Lid
- Emblem 3021-058-672 \$69.95 ea
- 67 Shelby GT-500 Grille / Dash / Trunk Lid
- Emblem 3021-058-673 \$69.95 ea
- 68 Mustang Grille Horse 3021-058-681 \$39.95 ea
- 68 Mustang Grille Corral Molding 3021-058-682 \$39.95 ea



- 69 Mustang (exc. Shelby) Grille Emblem 3022-058-691S \$39.95 ea
- 69-70 . . Shelby Mustang Grille Emblem (Snake) 3022-058-692 \$24.95 ea
- 70 Mustang (exc. Shelby) Grille Emblem 3022-058-701S \$34.95 ea



- 71-72 . . Mustang Standard Grille (except Mach 1)
- Horse Emblem 3023-058-711 \$39.95 ea
- Corral Molding 3023-058-712 \$49.95 ea
- 71-73 . . Mustang Mach I Grille Emblem 3023-058-713S \$29.95 ea
- 73 Mustang Standard Grille (except Mach 1)
- Corral Molding 3023-058-732 \$69.95 ea



Headlamp Panel Inner Brackets

Die-stamped steel brackets used to reinforce the headlamp area with correct oblong holes.

- 64-66 . . Mustang, Left / Right 3020-065-64L / R \$24.95 ea



Mustang

Headlamp Assemblies and Parts

Complete reproduction headlamp assembly replaces broken or damaged parts with a new housing, door, mounting ring, retaining ring, and mounting hardware. Sealed beam units are not included and not available from Goodmark.



- 64-66 .. Mustang
- Headlamp Assembly, Left / Right ... 3020-061-64LS / RS \$149.95 ea
 - Assembly Hardware Kit (use 2) ... 3020-069-64S \$8.95 kit
 - Sealed Beam (with logo) (use 2) ... 3020-061-641 \$19.95 ea
 - Headlamp Door, Left / Right ... 3020-060-64L / R ... \$34.95 ea
 - Retaining Ring (use 2) 3020-062-64 \$9.95 ea
 - Retaining Ring Screw Kit (6 pieces) 3020-062-641S \$6.95 kit
 - Mounting Ring, Left / Right 3020-063-64L / R ... \$14.95 ea



- 67-68 .. Mustang (except Shelby)
- Headlamp Assembly, Left / Right ... 3021-061-67LS / RS \$159.95 set
 - Assembly Hardware Kit (use 2) ... 3021-069-67S \$9.95 kit
 - Assembly to Body Seal (use 2) ... 3021-061-671 \$6.95 ea
 - Sealed Beam (with logo) (use 2) ... 3020-061-641 \$19.95 ea
 - Headlamp Door (use 2) 3021-060-67 \$10.95 ea
 - Headlamp Adjuster Kit (14 pieces) ... 3021-069-671S \$17.95 kit
 - Headlamp Retaining Ring (use 2) ... 3021-062-67 \$11.95 ea
 - Retaining Ring Screw Kit (6 pieces) 3020-062-641S \$6.95 kit
 - Mounting Ring, Left / Right 3021-063-67L / R ... \$17.95 ea



- 67-68 .. Shelby Mustang
- Sealed Beam (with logo) (use 2) ... 3020-061-641 \$19.95 ea
 - Headlamp Adjuster Kit (14 pieces) ... 3021-069-671S \$17.95 kit
 - Headlamp Retaining Ring (use 2) ... 3021-062-67 \$11.95 ea
 - Retaining Ring Screw Kit (6 pieces) 3020-062-641S \$6.95 kit



- 67-68 .. Cougar
- Sealed Beam (with logo)
 - Outer (use 2) 3321-061-671 \$19.95 ea
 - Inner (use 2) 3321-061-672 \$19.95 ea
 - Retaining Ring (use 4) 3022-062-69 \$11.95 ea
 - Retaining Ring Screw Kit (12 pcs) ... 3022-062-69S \$6.95 kit
 - Outer Mounting Ring, Right / Left ... 3022-063-691L / R ... \$17.95 ea

Headlamp Assemblies and Parts (continued)



- 69 .. Mustang (exc. Shelby)
- Headlamp Assembly, Left / Right ... 3022-061-69LS/RS. \$319.95 ea
 - Assembly Hardware Kit (use 2) ... 3022-069-69S \$6.95 kit
 - Assembly to Body Seal (use 2) ... 3022-061-692 \$5.95 ea
 - Sealed Beam (with logo)
 - Outer (use 2) 3321-061-671 \$19.95 ea
 - Inner (use 2) 3321-061-672 \$19.95 ea
 - Outer Headlamp Door (use 2) ... 3022-060-691 \$14.95 ea
 - Inner Headlamp Door, Left / Right ... 3022-060-692L / R ... \$19.95 ea
 - Headlamp Adjusting Kit (28 pieces) ... 3022-069-691S \$24.95 kit
 - Retaining Ring (use 4) 3022-062-69 \$11.95 ea
 - Retaining Ring Screw Kit (12 pcs) ... 3022-062-69S \$6.95 kit
 - Outer Mounting Ring, Left / Right ... 3022-063-691L / R ... \$17.95 ea
 - Inner Mounting Ring, Left / Right ... 3022-063-692L / R ... \$22.95 ea
- 69-70 .. Shelby Mustang
- Headlamp Adjusting Kit (14 pieces) ... 3022-069-692S \$17.95 kit
 - Sealed Beam (with logo) (use 2) ... 3020-061-641 \$19.95 ea
 - Headlamp Door (use 2) 3021-060-67 \$14.95 ea
 - Headlamp Retaining Ring (use 2) ... 3021-062-67 \$11.95 ea
 - Retaining Ring Screw Kit (6 pieces) ... 3020-062-641S \$6.95 kit
 - Mounting Ring, Left / Right 3021-063-67L / R ... \$17.95 ea
- 69-73 .. Cougar
- Headlamp Adjusting Kit (28 pcs) ... 3322-069-69S \$24.95 kit
 - Sealed Beam (with logo)
 - Outer (use 2) 3321-061-671 \$19.95 ea
 - Inner (use 2) 3321-061-672 \$19.95 ea
 - Retaining Ring (use 4) 3022-062-69 \$11.95 ea
 - Retaining Ring Screw Kit (12 pcs) ... 3022-062-69S \$6.95 kit
- 69-70 .. Outer Mounting Ring, Left / Right ... 3022-063-691L / R ... \$17.95 ea
- 71-73 .. Inner Mounting Ring, Left / Right ... 3022-063-692L / R ... \$22.95 ea



- 70 .. Mustang (exc. Shelby)
- Headlamp Assembly
 - (without molding), Left / Right ... 3022-061-701LS / RS \$349.95 ea
 - (with molding), Left / Right ... 3022-061-702LS / RS \$399.95 ea
 - Sealed Beam (with logo) (use 2) ... 3020-061-641 \$19.95 ea
 - Bezel, Left / Right pair 3022-060-70P \$69.95 pr
 - Housing, Left / Right 3022-110-701L / R ... \$299.95 ea
 - Housing Trim Plate, Left / Right ... 3022-110-702L / R ... \$22.95 ea
 - Headlamp Molding Hardware Kit (8 pieces)
 - 3022-115-701S \$6.95 kit
 - Retaining Ring (use 2) 3022-062-70 \$24.95 ea
 - Mounting Ring, Left / Right ... 3022-063-70L / R ... \$34.95 ea
 - Headlamp Adjusting Kit (14 pieces) ... 3022-069-701S \$17.95 kit
 - Adjuster Nut to Extension Hardware Kit (4 pieces)
 - 3022-069-702S \$6.95 kit



1 Cougar



Headlamp Assemblies and Parts (continued)



- 71-73 .. Mustang
 Housing with Mounting Ring,
 Left / Right 3023-063-711L / R .. \$139.95 ea
 Sealed Beam (with logo) (use 2) 3020-061-641 \$19.95 ea
 '71-72 Retaining Ring (use 2) 3022-062-70 \$24.95 ea
 '73 Retaining Ring (use 2) 3020-062-64 \$9.95 ea
 Retaining Ring Screw Kit (6 pieces) 3023-062-71S \$6.95 kit
 Headlamp Adjusting Kit (10 pieces) .3023-069-71S \$14.95 kit

Park Lamp Assemblies and Parts



- All new parts designed to replace factory park lamp assemblies.
 64 Mustang Park Lamp Lens (w/ logo) 3020-070-641 \$6.95 ea
 64-66 .. Mustang, '67-68 Cougar
 Park Lamp Lens Gaskets (pr) 3020-072-64P \$2.95 pr
 Housing only, Left / Right 3020-071-64L / R ... \$19.95 ea
 Park Lamp Mount Hardware Kit (4 pieces)
 3020-071-641S \$6.95 kit
 Housing Retainer only, Left / Right .3020-071-641L / R ... \$9.95 ea
 Housing to Body Mounting Seal only, Left / Right
 3020-071-642L / R ... \$3.95 ea
 Lens Screw Kit (4 pieces) 3020-070-641S \$6.95 kit



- 65-66 .. Mustang
 Park Lamp Assembly, Left / Right ... 3020-071-64LS / RS. \$29.95 ea
 Lens (w/ gasket & screws) (use 2) .3020-070-64 \$4.95 ea
 Lens (w/ logo) (use 2) 3020-070-651 \$6.95 ea



- 67-68 .. Mustang
 Park Lamp Assembly, Left / Right ... 3021-071-67LS / RS. \$74.95 ea
 Housing only (use 2) 3021-071-671 \$29.95 ea
 Mount Hardware Kit (4 pieces) 3021-071-671S \$6.95 ea
 Housing Door only, Left / Right 3021-071-672L / R .. \$17.95 ea
 Housing Retainer only, Left / Right .3021-071-673L / R .. \$19.95 ea



- Lens (w/ gasket & screws) (no logo) 3021-070-67S \$5.95 ea
 Lens (w/ logo) (use 2) 3021-070-671 \$6.95 ea
 Lens Screw Kit (4 pieces) 3021-070-671S \$6.95 kit

Park Lamp Assemblies and Parts (continued)



- 69 Mustang (exc. Shelby)
 Park Lamp Assembly, Left / Right ... 3022-071-69LS / RS. \$54.95 ea
 Housing only, Left / Right 3022-071-691L / R ... \$49.95 ea
 Park Lamp Mount Hardware Kit (4 pieces)
 3022-071-691S \$6.95 kit



- 69-70 .. Mustang (exc. Shelby)
 Lens only, Left / Right 3022-070-69L / R \$9.95 ea
 Lens Gasket only (use 2) 3022-072-69 \$3.95 ea
 Lens Screw Kit (4 pieces) 3022-070-69S \$6.95 kit



- 69-70 .. Shelby Mustang, 69-70 Cougar, 70 Mustang Mach 1 with Sport Lamps
 Left / Right Pair Lenses 3322-070-691P \$49.95 pr
 Left / Right Pair Lens Gaskets 3322-072-69P \$4.95 pr



- 70 Mustang (exc. Shelby)
 Park Lamp Assembly, Left / Right ... 3022-071-70LS / RS. \$59.95 ea
 Housing only, Left / Right 3022-071-701L / R ... \$49.95 ea
 Park Lamp Mount Hardware Kit (4 pieces)
 3022-071-701S \$6.95 kit



- 71-72 .. Mustang
 Park Lamp Assembly, Left / Right ... 3023-071-71LS / RS. \$59.95 ea
 Park Lamp Mount Hardware Kit (4 pieces)
 3023-071-71S \$6.95 kit
 Lens only, Left / Right 3023-070-71L / R ... \$14.95 ea
 Park Lamp Lens Screw Kit (4 pieces)
 3023-070-71S \$6.95 kit
 Lens Gaskets only (pair) 3023-072-71P \$6.95 pr



Mustang

FRONT END SHEETMETAL



Front Stone Deflectors

New EDP coated panels fill between the bumper and front valance. Always a good idea to replace as they are commonly damaged by road debris.

- | | | | |
|--|--------------------|-------------------|------------|
| | | | |
| 64-66 .. Mustang | 3020-020-64 | \$24.95 ea | |
| Heavy Gauge Steel - Best Quality! | 3020-020-641 | \$59.95 ea | |
| 67-68 .. Mustang | 3021-020-67 | \$24.95 ea | |
| | | | |
| 67-68 .. Mustang Deflector Mount Brackets | | | |
| (set of 3) | 3021-020-67S | \$39.95 set | |
| | | | |
| 69 | Mustang | 3022-020-69 | \$21.95 ea |
| Heavy Gauge Steel - Best Quality! | 3022-020-691 | \$49.95 ea | |
| 70 | Mustang | 3022-020-70 | \$21.95 ea |

Front Valance Panels

EDP coated panels replace damaged originals. These panels always see a lot of damage from scrubbing curbs, rocks, etc.

- | | | | |
|--|---|--------------------|-------------|
| | | | |
| 64-66 .. Mustang (heavy-gauge steel) | 3020-025-641 | \$59.95 ea | |
| (standard quality) | 3020-025-64 | \$29.95 ea | |
| 67-68 .. Mustang (heavy-gauge steel) | 3021-025-671 | \$59.95 ea | |
| (standard quality) | 3021-025-67 | \$44.95 ea | |
| | | | |
| 69 | Mustang (exc. Shelby) (modify for Boss) | 3022-025-69 | \$59.95 ea |
| 70 | Mustang (exc. Shelby) | 3022-025-70 | \$59.95 ea |
| 69-70 .. Mustang (exc. Shelby) Valance to Fender Bracket (use 2) | | 3022-025-691 | \$5.95 ea |
| | | | |
| 71-72 .. Mustang | 3023-025-71 | \$109.95 ea | |
| 73 | Mustang | 3023-025-73 | \$109.95 ea |

Front Spoilers

New injection molded plastic spoilers like originals.



- | | | | |
|----------|--|--------------------|------------|
| 69 | Mustang Fastback (except Shelby) | 3022-035-69 | \$79.95 ea |
| 70 | Mustang Fastback (except Shelby) | 3022-035-702 | \$79.95 ea |
| 71-73 .. | Mustang Mach 1 | 3023-035-71 | \$74.95 ea |

Steel Front Fenders

EDP coated heavy-gauge steel. These are the best quality on the market. All fenders ship via Truck Freight.



- | | | | |
|---|--|----------------------|-------------|
| 64-66 .. Mustang Fender, Left / Right | 3020-100-641L / R .. | \$129.95 ea | |
| | | | |
| 67 | Mustang Fender, Left / Right | 3021-100-671L / R .. | \$159.95 ea |
| 68 | Mustang Fender, Left / Right | 3021-100-681L / R .. | \$159.95 ea |
| | | | |
| 69 | Mustang (exc. Shelby) (w/o rolled edge for Boss) Fender, | | |
| Left / Right | 3022-100-69L / R .. | \$279.95 ea | |
| 70 | Mustang (exc. Shelby) (w/o rolled edge for Boss) Fender, | | |
| Left / Right | 3022-100-70L / R .. | \$279.95 ea | |
| | | | |
| 71-72 .. Mustang Fender, Left / Right | 3023-100-71L / R .. | \$379.95 ea | |
| 73 | Mustang Fender, Left / Right | 3023-100-73L / R .. | \$379.95 ea |

Fender to Cowl Mounting Pads

Die cut foam pads designed to eliminate rattles due to the fenders rubbing against the cowl. Use 2 per car.

- | | | |
|--------------------------------|--------------------|-----------|
| 64-66 .. Mustang (use 2) | 3020-380-642 | \$2.95 ea |
|--------------------------------|--------------------|-----------|

Front Fender Eyebrow Moldings

Die-cast chrome or painted pot-metal moldings on the front edge of the fender. Each molding comes with attaching hardware.



- | | | | |
|---|--|----------------------|------------|
| 71-72 .. Mustang (painted), Left / Right pair | 3023-115-711P | \$69.95 pr | |
| 71-72 .. Mustang (chrome), Left / Right | 3023-115-712L / R .. | \$44.95 ea | |
| 73 | Mustang (painted), Left / Right pair | 3023-115-731P | \$69.95 pr |
| 73 | Mustang (chrome), Left / Right | 3023-115-732L / R .. | \$44.95 ea |

1 Cougar

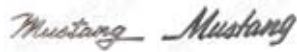


Front Fender Emblems

Fully licensed, chromed and painted die-cast emblems for the front fenders. Excellent quality.



- 64 "MUSTANG" (with generator) (use 2) . . .3020-130-641 \$12.95 ea
- 65-66 . . "MUSTANG" (with alternator) (use 2) . .3020-130-651 \$9.95 ea
- 65-66 . . "MUSTANG 2+2" (use 2) (fastback) . . .3020-130-652 \$9.95 ea
- 65-67 . . "MUSTANG" GT Fender Letter Set, also fits 67-70 Coupe
 Trunk Lid3020-130-654S \$14.95 set



- 68 "Mustang" (use 2)3021-130-681 \$9.95 ea
- 69-73 . . "Mustang" (use 2)3022-130-691 \$9.95 ea



- 65-66 . . Mustang "GT" (ceramic) (use 2) (to 10/1/65)
3020-130-653 \$12.95 ea
- 66 Mustang "GT" (plastic) (use 2) (from 10/1/65)
3020-130-661 \$11.95 ea
- 67 Mustang "GT" (M/T) Letters (use 2) . . .3021-130-673S \$39.95 ea
- 67 Mustang "GT-A" (A/T) (use 2)3021-130-674 \$39.95 ea
- 68 Mustang "GT" (use 2)3021-130-683 \$24.95 ea



- 64 Mustang "260" V8 (use 2)3020-130-643 \$10.95 ea
- 64-66 . . Mustang "289" V8 (use 2)3020-130-644 \$10.95 ea
- 64-66 . . Mustang "High Performance" (use 2) . . .3020-130-645 \$10.95 ea
- 64-66 . . Mustang, also '67-68 L6 Mustang Running Horse (no engine logo)
 Left / Right3020-130-642L / R . . . \$9.95 ea



- 67-68 . . Mustang Running Horse, 289, LH / RH 3021-130-671L / R . . \$14.95 ea
- 67-68 . . Mustang Running Horse, 390, LH / RH 3021-130-672L / R . . \$19.95 ea
- 68 Mustang Running Horse, 302, LH / RH 3021-130-682L / R . . \$12.95 ea



- 67 Shelby "GT-350" (use 2)3021-130-675 \$59.95 ea
- 67 Shelby "GT-500" (use 2)3021-130-676 \$59.95 ea
- 68 Shelby "Cobra" Coiled Snake (use 2) . . .3021-130-684 \$69.95 ea
- 68 Shelby Coiled Snake (flat) (use 2)3021-130-685 \$24.95 ea
- 68 Shelby "COBRA" (use 2) (also fits '69-70 Shelby Sail Panel)
3021-130-687 \$19.95 ea
- 68 Shelby GT-500KR "Cobra Jet 428" (use 2)
3021-130-686 \$39.95 ea
- 69-70 . . Shelby GT-500 "Cobra Jet 428" (use 2) 3022-130-692 \$29.95 ea

Front Fender Antenna Assemblies

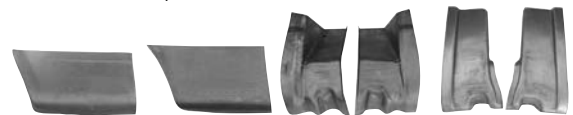
All parts needed to mount the antenna to the fender (including mast).



- 64-67 . . Mustang3020-170-64S \$17.95 set
- 68 Mustang3021-170-68S \$9.95 set
- 69-73 . . Mustang3022-170-69S \$39.95 set

Lower Rear Front Fender Patches

New steel patches to repair the common rust area at the bottom rear of the fender. Eliminates the need to replace the fender.



- 64-66 . . Mustang Outer (10.5" H x 19" L),
 Left / Right3020-190-64L / R . . \$34.95 ea
- 67-68 . . Mustang Outer (13" H x 20" L),
 Left / Right3021-190-67L / R . . \$34.95 ea
- 64-66 . . Mustang Inner (10.5" H x 6" L),
 Left / Right3020-195-64L / R . . \$59.95 ea
- 67-68 . . Mustang Inner (12" H x 7" L),
 Left / Right3021-195-67L / R . . \$19.95 ea

Fender Splash Shields

EDP coated steel panels used to keep water out of the front and rear of the fender. Gaskets are available separately.



- 64-66 . . Mustang Front Shield, Left / Right . . .3020-340-64L / R . . \$9.95 ea
- 64-66 . . Mustang Rear Shield, Left / Right . . .3020-345-64L / R . . \$9.95 ea
- 64-66 . . Mustang Splash Shield Kit (6-pieces) . .3020-340-641S . . \$14.95 kit
- 67-68 . . Mustang Front Shield, Left / Right . . .3021-340-67L / R . . \$9.95 ea
- 67-68 . . Mustang Rear Shield, Left / Right . . .3021-345-67L / R . . \$12.95 ea
- 67-68 . . Mustang Rear Support Brackets (pair) .3021-345-671P . . \$11.95 pr
- 67-68 . . Mustang Splash Shield Kit (10-pieces) .3021-340-671S . . \$17.95 kit

Shock Tower to Firewall Braces

EDP coated steel braces used between the shock tower and the firewall. Sold in matched pairs.



- 67-68 . . Mustang, Left / Right pair3021-120-67P \$44.95 pr
- 69-70 . . Mustang, Left / Right pair3022-120-69P \$44.95 pr
- 71-73 . . Mustang, Left / Right pair3023-120-71P \$84.95 pr



Mustang

Shock Tower Assemblies and Outer Shock Tower Covers

EDP coated steel assemblies used to replace shock towers and cover the outside. Hardware for the outer covers is included in our Master Body Hardware Kit.



- 64-66 .. Mustang Shock Tower Assembly (w/ bracket),
..... Left / Right 3020-350-64LS / RS \$129.95 ea
- 64-66 .. Mustang Outer Shock Tower Cover, Left / Right
..... (without bracket) 3020-350-641L / R .. \$29.95 ea
- (with bracket) 3020-350-642L / R .. \$59.95 ea



- 67-68 .. Mustang / Cougar Shock Tower Assembly (w/ bracket)
..... (except 428 or 429), Left / Right ... 3021-350-67LS / RS \$134.95 ea
- 67-70 .. Mustang / Cougar (except Boss 429) Outer Shock Tower Cover,
..... Left / Right 3021-350-671L / R .. \$79.95 ea
- 69-70 .. Mustang / Cougar Shock Tower Assembly, (w/ bracket)
..... (except 428 or 429), Left / Right ... 3022-350-69LS / RS \$149.95 ea

Shock Tower Top Caps

EDP coated or chrome steel top to the shock tower.



- 64-66 .. Mustang (painted) (use 2) 3020-360-64 \$19.95 ea
- 64-66 .. Mustang (chrome) (use 2) 3020-360-64C \$24.95 ea
- 67-70 .. Mustang / Cougar (painted) (use 2) ... 3021-360-67 \$19.95 ea
- 67-70 .. Mustang / Cougar (chrome) (use 2) ... 3021-360-67C \$24.95 ea

Inner Fender Aprons

EDP coated steel panels used to form the front and rear part of the inner fender.



- 64-66 .. Mustang Front, Left / Right 3020-355-64L / R ... \$29.95 ea
- 64-66 .. Mustang Rear, Left / Right 3020-356-64L / R ... \$29.95 ea
- 64-66 .. Mustang Rear Extension, Left / Right ... 3020-357-64L / R ... \$24.95 ea



- 67-68 .. Mustang / Cougar Front, Left / Right ... 3021-355-67L / R ... \$29.95 ea
- 67-68 .. Mustang / Cougar Rear, Left / Right ... 3021-356-67L / R ... \$27.95 ea
- 67-68 .. Mustang / Cougar Rear Extension,
..... Left / Right 3021-357-67L / R ... \$24.95 ea

Inner Fender Aprons (continued)



- 69-70 .. Mustang / Cougar Front, Left / Right ... 3022-355-69L / R ... \$44.95 ea
- 69-70 .. Mustang / Cougar Rear, Left / Right ... 3022-356-69L / R ... \$49.95 ea
- 69-70 .. Mustang / Cougar Rear Extension,
..... Left / Right 3022-357-69L / R ... \$24.95 ea



- 71-73 .. Mustang / Cougar Front, Left / Right ... 3023-355-71L / R ... \$44.95 ea
- 71-73 .. Mustang / Cougar Rear, Left / Right ... 3023-356-71L / R ... \$49.95 ea

Front Frame Rails and Supports

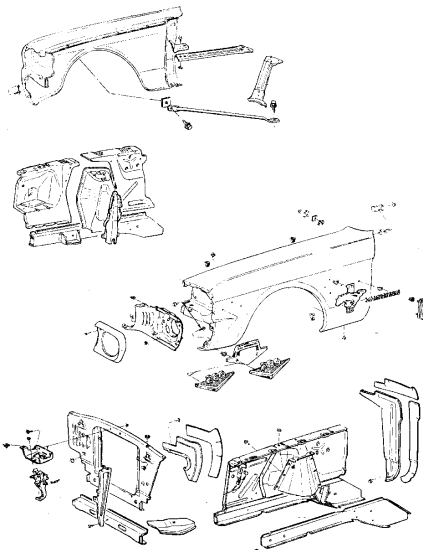


Complete assembly with inner and outer sections, like OE.

- 64-70 .. Mustang / Cougar Frame Rail,
..... Left / Right 3020-390-64L / R ... \$179.95 ea



- 64-68 .. Mustang / Cougar Coupe / Fastback Frame Rail Support (use 2)
..... 3020-390-641 \$34.95 ea
- 64-68 .. Mustang / Cougar Convertible Frame Rail Support (use 2)
..... 3020-390-642 \$34.95 ea
- 64-70 .. Mustang / Cougar Convertible Inner Floor Frame Patch (use 2)
..... 3020-390-643 \$24.95 ea
- 69-70 .. Mustang / Cougar Coupe / Fastback Frame Rail Supports (pair)
..... 3022-390-691P \$109.95 pr
- 71-73 .. Mustang / Cougar Inner Floor Frame Support,
..... Left / Right 3023-390-711L / R ... \$39.95 ea

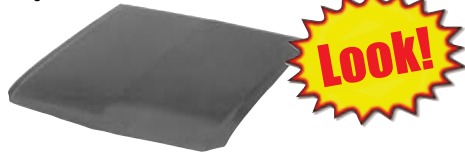


1 Cougar



Steel Hoods

New heavy-gauge steel reproduction hoods are the best quality on the market. All hoods ship via Truck Freight.

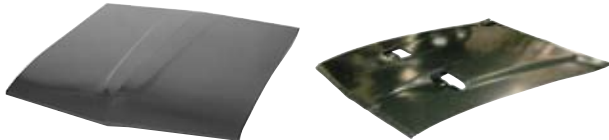


64-66 .. Mustang (exc. Shelby) **(best quality!)** .3020-200-641 \$159.95 ea



67-68 .. Mustang (exc. Shelby)
 w/o turn signal holes3021-200-671 \$184.95 ea
 w/ turn signal holes3021-200-672 \$184.95 ea

NOTE: Holes will need to be punched for the front hood letters on '67 models.



69-70 .. Mustang (exc. Shelby or Boss 429) . . .3022-200-691 \$269.95 ea
 71-73 .. Mustang Mach I or Boss 351 (w/ hood scoop holes)
3023-200-712 \$359.95 ea

Hood Insulation

Die-cut insulation pad and clips to replace missing or worn originals.



69-70 .. Mustang (includes clips)3022-202-69S \$49.95 kit

Hood Front Moldings

New chrome die-cast or polished aluminum moldings for the front edge of the hood. All moldings come with mounting hardware and clips.

65 Mustang GT, '66 Mustang3020-250-65 \$14.95 ea
 67-68 .. Mustang (exc. Shelby)3021-250-67 \$14.95 ea

69 Mustang (exc. Shelby)3022-250-69 \$24.95 ea
 70 Mustang (exc. Shelby)3022-250-70 \$24.95 ea

71-72 .. Mustang (painted)3023-250-711 \$89.95 ea
 71-72 .. Mustang (chrome)3023-250-712 \$99.95 ea

73 Mustang (painted)3023-250-731 \$89.95 ea
 73 Mustang (chrome)3023-250-732 \$99.95 ea

Hood Emblems

New chrome die-cast and painted emblems for popular models. All emblems use original mounting methods.



64-66 .. Mustang "FORD"3020-215-64S \$12.95 set
 67 Mustang "FORD"3021-215-67S \$12.95 set
 68-70 .. "SHELBY" Mustang3021-215-681S \$59.95 set



69 Mustang "351" Hood Scoop (use 2) . . .3022-215-691 \$29.95 ea
 69-70 .. Mustang "390" Hood Scoop (use 2) . . .3022-215-692 \$29.95 ea
 69 Mustang "428" Hood Scoop (use 2) . . .3022-215-693 \$29.95 ea
 69-70 .. Mustang "Cobra Jet" Shaker Scoop (use 2)
3022-215-694 \$34.95 ea

Hood Scoop Inserts

Die-cast primed inserts, grilles, lamps, and wires for models with dual-scooped hood. Plastic grilles available for models without functional Ram Air on 1971-73 models.



67-68 .. Mustang Hood Scoop Plates, LH / RH pair
 (includes grilles)3021-255-67P \$119.95 pr
 67-68 .. Mustang Hood Scoop Plate Grille (use 2 per car)
3021-255-671 \$9.95 ea
 67-68 .. Mustang Hood Scoop Insert Lamp Assembly
 (use 2 per car)3021-255-672S \$24.95 ea
 Gaskets for Lamps (pair)3021-255-672P \$3.95 pr
 67-68 .. Mustang Hood Scoop Insert Lamp Wire
 (use 2 per car)3021-255-673 \$24.95 ea
 67-68 .. Mustang Hood Scoop Ornament / Lamp
 Hardware Kit (28 pieces)3021-255-671S \$27.95 kit



69-70 .. Mustang Hood Scoop Assembly (with grille and seal)
 Bolt-On Assembly3022-255-691 \$159.95 ea
 Grille only3022-255-692 \$29.95 ea
 Grille Seal only3022-255-692A \$12.95 ea
 69-70 .. Mustang Hood Scoop Insert Lamp Assembly
 (use 2 per car)3022-255-693 \$59.95 ea



69-70 .. Mustang Shaker Scoop Assembly, includes metal air cleaner lid, air
 cleaner seal, filter, and decal
 SB V8 except Boss 3023022-255-694S \$499.95 set
 BB V8 or Boss 3023022-255-694AS \$499.95 set
 69-70 .. Mustang Shaker Scoop Trim Ring3022-255-695 \$149.95 ea



Mustang

Hood Scoop Inserts (continued)



- 71-73 . . Mustang Mach I with dual scoop hood
- Hood Scoop Inserts, LH / RH pair . . .3023-255-711P \$79.95 pr
- Hood Scoop Grilles, LH / RH pair . . .3023-255-712P \$19.95 pr
- Hood Ram Air Plenum Assembly . . .3023-255-713S . . . \$289.95 ea
- Air Cleaner to Hood Seal3023-255-714 \$99.95 ea

Hood Bumpers

Screw-in cap and stud used to adjust the front hood height when closed, or cushion the hood against the fenders or cowl.



- 64 Mustang Hood Adjustment Bumper with nut (use 2)
-3020-205-64S \$5.95 ea
- 65-73 . . Mustang / Cougar Hood Adjustment Bumpers (with nuts) (pair)
-3020-205-65P \$5.95 pr



- 64-73 . . Mustang Hood to Fender Bumpers (set of 4)
- 64-663020-206-641S \$5.95 kit
- 67-683021-206-671S \$5.95 kit
- 69-703022-206-691S \$5.95 kit
- 71-733023-206-711S \$5.95 kit



- 69-73 . . Mustang / Cougar Hood to Cowl Bumpers
- 69-70 (set of 2)3022-206-692S \$5.95 kit
- 71-73 (set of 3)3023-206-712S \$6.95 kit

Hood Hinges

New steel hinges replace worn or broken originals.



- 64-66 . . Mustang, Left / Right3020-210-64L / R . . . \$29.95 ea
- 67-70 . . Mustang / Cougar, Left / Right3021-210-67L / R . . . \$34.95 ea

Hood Hinge Springs

Steel springs used with factory steel hoods. Not for use with fiberglass hoods.

- 64-70 . . Mustang, 67-69 Cougar (pair)3020-211-64P \$12.95 pr
- 71-73 . . Mustang / Cougar (use 2)3023-211-71 \$14.95 ea



Hood Latch Assembly

Brand new hood latch assemblies to replace broken or missing originals. Comes with top plate if required.



- 64-65 . . Mustang3020-319-64 \$69.95 ea
- also includes support brace3020-319-64S \$139.95 ea
- 66 Mustang3020-319-66 \$69.95 ea
- also includes support brace3020-319-66S \$139.95 ea
- 64-66 . . Mustang Hood Latch Pin Set (bolt/nut/washer)
-3020-319-641S \$17.95 set
- 64-66 . . Mustang Safety Latch3020-319-642 \$9.95 ea



- 67 Mustang3021-319-67 \$69.95 ea
- 68 Mustang3021-319-68 \$69.95 ea
- 69-70 . . Mustang3022-319-69 \$69.95 ea
- 71-73 . . Mustang3023-319-71 \$79.95 ea



Hood Latch Support Braces

EDP coated steel brace supports the hood latch assembly.

- 64-66 . . Mustang3020-321-64 \$9.95 ea
- 67-68 . . Mustang3021-321-67 \$49.95 ea
- 69-70 . . Mustang3022-321-69 \$39.95 ea



Radiator Core Supports

Heavy-gauge steel replacements available with or without front crossmembers.



65-65 .. Mustang (with alternator) 3020-320-65 \$69.95 ea
 (also with front crossmember)..... 3020-320-651 \$129.95 ea



67-68 .. Mustang / Cougar 3021-320-67 \$69.95 ea
 (also with front crossmember)..... 3021-320-671 \$149.95 ea



69 Mustang / Cougar 3022-320-69 \$119.95 ea
 (also with front crossmember)..... 3022-320-691 \$199.95 ea



70 Mustang / Cougar 3022-320-70 \$119.95 ea
 (also with front crossmember)..... 3022-320-701 \$199.95 ea



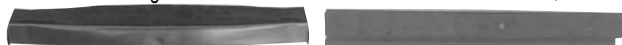
71-73 .. Mustang / Cougar (exc. Convertible) .. 3023-320-711 \$199.95 ea

Front Crossmembers

EDP coated steel brace below the radiator support. These come with our nicest radiator supports.



64-66 .. Mustang 3020-322-64 \$39.95 ea
 64-66 .. Mustang Lower Strut Mount Bracket,
 Left / Right 3020-322-641L / R .. \$49.95 ea



67-68 .. Mustang / Cougar 3021-322-67 \$39.95 ea
 69-70 .. Mustang / Cougar 3022-322-69 \$39.95 ea



67-70 .. Mustang / Cougar
 Lower Strut Mount Bracket, LH / RH 3021-322-671L / R .. \$49.95 ea
 Rad Support Lower Bracket, L / R .. 3021-320-672L / R .. \$49.95 ea

UNDERHOOD DETAIL

Throttle Linkage Rods

New reproduction silver zinc rod connects to carb linkage to throttle bellcrank.
 (photo not available)

64-67 .. Mustang / Cougar 260 / 289 V8 3020-233-641 \$9.95 ea

Throttle Cables

New reproduction cable connects gas pedal to carb linkage.

69 Mustang / Cougar V8 3022-233-692 \$34.95 ea
 70 Mustang / Cougar V8 3022-233-702 \$34.95 ea



Transmission Kickdown Cables

Reproduction cable connects throttle linkage to the transmission vacuum control.
 66-68 .. Mustang / Cougar L6 or V8 (10.2" long) 3020-234-661 \$14.95 ea



Exhaust Manifold Heat Risers and Locks

New reproduction tube attaches to air cleaner and RH exhaust manifold for faster warm-up time.



64-67 .. Mustang / Cougar 260 / 289 V8 (except High Performance 289)
 3020-236-641S \$89.95 ea
 68-72 .. Mustang / Cougar 289 / 302 V8 3021-236-682S \$29.95 ea
 64-68 .. Mustang / Cougar 260/289/302 V8 Exhaust Manifold Lock Set
 (set of 8) 3020-237-642S \$6.95 set

Windshield Wiper Parts



New reproduction wiper arms fit popular models. Blades sold separately.
 64-65 .. Mustang Wiper Arms (chrome) (pair) .. 3020-242-64P \$29.95 pr
 66-70 .. Mustang / Cougar Wiper Arms (brushed) (pair)
 3020-242-66P \$29.95 pr
 64-68 .. Mustang / Cougar Wiper Blade (pair) .. 4020-242-673P \$19.95 pr
 69-70 .. Mustang / Cougar Wiper Blade (use 2) 4012-242-683 \$14.95 ea
 71-73 .. Mustang / Cougar Wiper Blade (use 2) 4343-242-615 \$14.95 ea



64-70 .. Mustang Wiper Link and Pivot Assembly
 64-66 Pivot Assembly 3020-242-642S \$99.95 ea
 64-66 Leather Pivot Seals (pair) .. 3020-242-642P \$14.95 pr
 67-68 Pivot Assembly 3021-242-672S \$99.95 ea
 67-68 Leather Pivot Seals (pair) .. 3021-242-672P \$14.95 pr
 69-70 Pivot Assembly 3022-242-692S \$129.95 ea
 64-65 .. Mustang Wiper Bezel / Nut Set (4 pcs) 3020-242-648S \$14.95 set



Mustang

Windshield Wiper Parts (continued)



- 64-65 . . Mustang Washer Nozzles (pair)3020-242-641P \$14.95 pr
- 66 Mustang Washer Nozzles (pair)3020-242-661P \$14.95 pr
- 67-68 . . Mustang Washer Nozzles (pair)3021-242-671P \$14.95 pr
- 69 Mustang Washer Nozzles (pair)3022-242-691P \$12.95 pr
- 70 Mustang Washer Nozzles (pair)3022-242-701P \$12.95 pr
- 71-73 . . Mustang Washer Nozzles (pair)3023-242-711P \$9.95 pr



- 64-66 . . Mustang Washer Hose Kit3020-242-647S \$6.95 kit
- 67-68 . . Mustang Washer Hose Kit3021-242-674S \$7.95 kit
- 69-70 . . Mustang Washer Hose Kit3022-242-693S \$7.95 kit
- 71-73 . . Mustang Washer Hose Kit3023-242-713S \$7.95 kit



- 64-66 . . Mustang Washer Bag Mount Bracket3020-242-643 \$7.95 ea
- 64-65 . . Mustang Washer Bag (twist on cap)3020-242-644 \$19.95 ea
- Cap only for bag (stainless steel)3020-242-645 \$6.95 ea
- 66 Mustang Washer Bag (flip top cap)3020-242-662 \$19.95 ea
- 66-67 . . Mustang Washer Bag (gold logo)3020-242-663 \$34.95 ea



- 67-68 . . Washer Reservoir3021-242-673 \$34.95 ea
- 69-70 . . Washer Reservoir3022-242-694 \$34.95 ea
- 64-65 . . Washer Pump (1 speed)3020-242-646 \$39.95 ea
- 65-66 . . Washer Pump (2 speed)3020-242-651 \$39.95 ea
- 69-73 . . Washer Pump (2 speed)3022-242-695 \$39.95 ea
- 67-68 . . Washer Pedal Pad3021-242-675 \$3.95 ea
- 67-68 . . Wiper Motor Arm Bracket3021-242-676 \$19.95 ea
- 67-68 . . Wiper Motor Mount Bracket3021-242-677 \$39.95 ea
- 69-70 . . Wiper Motor Mount Bracket3022-242-697 \$39.95 ea

A/C Discharge Hoses

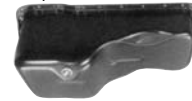
New reproduction high pressure hoses for the air conditioning system.

(photo not available)

- 64-66 . . Mustang L63020-260-641 \$39.95 ea
- 64-66 . . Mustang V83020-242-642 \$39.95 ea

Oil Pans

New stamped steel reproduction pans available either painted or chrome.



- 64-73 . . 260 / 289 / 302 (painted)3020-264-642 \$49.95 ea
- (chromed)3020-264-642C \$64.95 ea
- 67-70 . . 390 / 428 (except CJ) (painted)3021-264-67 \$59.95 ea
- (chromed)3021-264-67C \$69.95 ea
- 69-73 . . 351W (painted)3022-264-69 \$59.95 ea
- (chromed)3022-264-69C \$74.95 ea
- 70-73 . . 351C (painted)3022-264-70 \$59.95 ea
- (chromed)3022-264-70C \$79.95 ea

Underhood Electrical Parts

Correct yellow top coils replace aftermarket or malfunctioning originals. Distributor caps replace cracked or missing originals, and starter solenoids feature correct function and appearance.



- 64-73 . . Mustang / Cougar Ignition Coil (Yellow Top)3020-275-641 \$54.95 ea
- 68-73 . . Mustang / Cougar V8 Distributor Cap3021-276-681 \$9.95 ea
- 64-73 . . Mustang / Cougar Starter Solenoid3020-277-641 \$9.95 ea

Engine Sending Units

New reproduction sending units for engine temperature and oil pressure. Excellent quality and fair price.



- 64-71 . . Temperature Sending Unit3020-283-641 \$6.95 ea
- (up to 9/1/65)3020-283-641 \$6.95 ea
- (from 9/1/65)3020-283-661 \$7.95 ea



- 64-73 . . Oil Pressure Sending Unit3020-284-641 \$8.95 ea
- 64-65 all w/ warning lamps, 67-68 289 / 302 w/ tach (before 5/6/68)
- 65 w/ gauges, 66 all, 67-70 w/o tachometer, 71-73 w/ tachometer
- 67-69 289/302 w/o tachometer (except Boss 302)
- 3020-284-651 \$16.95 ea
- 3021-284-671 \$20.95 ea

/ Cougar



Battery Trays and Hardware



New steel trays with mounting brackets. Excellent quality!

64-66 .. Mustang (heavy gauge steel)3020-300-641	\$14.95 ea
..... Std. Quality (thinner gauge)3020-300-64	\$9.95 ea
67-70 .. Mustang / Cougar (heavy gauge steel)3021-300-671	\$14.95 ea
71-73 .. Mustang / Cougar3023-300-71	\$14.95 ea



64-66 .. Mustang Hold-Down Clamp3020-301-641	\$5.95 ea
64-66 .. Mustang Hold-Down Clamp Hardware Kit (2 pieces)3020-301-642S	\$6.95 kit
67-69 .. Mustang / Cougar Battery Hold-Down Clamp3021-301-67	\$6.95 ea
67-73 .. Mustang / Cougar Hold-Down Clamp Hardware Kit (5 pieces)3021-301-671S	\$12.95 kit

Radiator Fan Shrouds and Brackets



New steel shrouds and mounting brackets for popular models with A/C or HD Cooling. Radiator hoses do not have logos or numbers, but are great driver quality.

64-66 .. Mustang Shroud3020-310-64	\$29.95 ea
64-66 .. Mustang 2-row bracket3020-311-641	\$3.95 ea
64-66 .. Mustang 3-row bracket3020-311-642	\$3.95 ea
64-70 .. Small Block V8 Radiator Hose Set3020-306-642S	\$24.95 set

Export Braces

Steel braces from the cowl to the shock tower. Helps eliminate chassis flex. Available painted or chromed.



64-70 .. Mustang / Cougar (painted)3020-330-64	\$39.95 ea
64-70 .. Mustang / Cougar (chromed)3020-330-641	\$49.95 ea

64-66 .. Export Brace Mount Plate3020-330-642	\$39.95 ea	
64-66 .. Export Brace Hardware Kit (12 pieces)3020-330-64S	\$17.95 kit	
64-66 .. Export Brace Hardware Kit	(Stainless Steel) (32 pieces)3020-330-641S	\$22.95 kit
67-70 .. Export Brace Mount Plate3021-330-672	\$34.95 ea	
67-70 .. Export Brace Hardware Kit (12 pieces)3021-330-67S	\$17.95 kit	
67-70 .. Export Brace Hardware Kit	(Stainless Steel) (16 pieces)3021-330-671S	\$17.95 kit

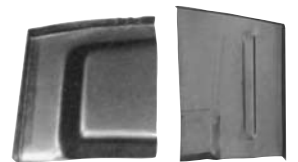
Monte Carlo Bars

Steel braces tie shock tower to shock tower to help eliminate chassis flex and improve handling. Available in straight or curved design, painted or chromed.



64-66 .. Mustang	(straight painted)3020-332-64	\$19.95 ea
..... (straight chromed)3020-332-641	\$29.95 ea	
..... (curved painted)3020-333-64	\$19.95 ea	
..... (curved chromed)3020-333-641	\$29.95 ea	
64-70 .. Mustang Monte Carlo Bar Hardware Kit	(4 pieces)3020-332-64S	\$6.95 kit
67-68 .. Mustang / Cougar	(straight painted)3021-332-67	\$19.95 ea
..... (straight chromed)3021-332-671	\$29.95 ea	
..... (curved painted)3021-333-67	\$19.95 ea	
..... (curved chromed)3021-333-671	\$29.95 ea	
69-70 .. Mustang / Cougar	(straight painted)3022-332-69	\$24.95 ea
..... (straight chromed)3022-332-691	\$34.95 ea	
..... (curved painted)3022-333-69	\$29.95 ea	
..... (curved chromed)3022-333-691	\$39.95 ea	

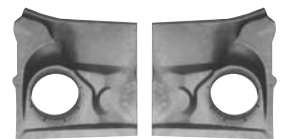
COWL AND FIREWALL



Firewall Patch Panels

Steel patch panels that repair rust in the outer upper firewall.

64-68 .. Mustang / Cougar Upper (13" H x 11" W),	Left / Right3020-375-64L / R	\$44.95 ea
64-70 .. Mustang / Cougar Lower (22" H x 18" W),	Left / Right3020-515-64L / R	\$29.95 ea



Upper Inner Cowl Panel Patches

Steel patch panels that repair rust in the outer upper inner cowl panel.

64-68 .. Mustang / Cougar (15.5" L x 18" W),	Left / Right3020-380-64L / R	\$64.95 ea
--	--------------------	-------------------------	------------



Mustang



Lower Inner Cowl Side Panels

Steel patch panels that repair rust in the lower inner cowl sides.

- 64-66 . . Mustang (12" L x 19.5" W), Left / Right .3020-385-64L / R . . . \$44.95 ea
- 67-68 . . Mustang / Cougar, Left / Right3021-385-67L / R . . . \$49.95 ea
- 69-70 . . Mustang / Cougar, Left / Right3022-385-69L / R . . . \$49.95 ea



Heater / Defroster Plenums

Plastic air plenum for models without factory A/C.

- 64-68 . . Mustang / Cougar3020-377-64 \$14.95 ea

Heater Hose Kits

New hoses with the correct color stripes for models without A/C.

- 64-68 . . Mustang / Cougar (white stripe) (8 ft.) . .3020-379-642 \$19.95 pr
- 68-70 . . Mustang / Cougar (red stripe) (8 ft.) . .3021-379-681 \$29.95 pr
- 70-73 . . Mustang / Cougar (yellow stripe) (8 ft.) .3022-379-701 \$29.95 pr



DOORS AND HARDWARE



Door Shells Check Freight

EDP coated assembly replaces entire door. Add window regulators and latches and vent window assembly for complete replacement. *NOTE: You must cut holes for Deluxe Interior Courtesy Lamps mounted in the door.*



- 64-66 . . Mustang, Left / Right3020-400-64L / R . . \$259.95 ea
- 67-68 . . Mustang, Left / Right3021-400-67L / R . . \$309.95 ea



- 69-70 . . Mustang, Left / Right3022-400-69L / R . . \$349.95 ea

Outer Door Skins

Just the outer repair skin for those cars not needing full door replacement.



- 64-66 . . Mustang, Left / Right3020-450-64L / R . . \$39.95 ea
- 67-68 . . Mustang, Left / Right3021-450-67L / R . . \$59.95 ea



- 69-70 . . Mustang, Left / Right3022-450-69L / R . . \$119.95 ea

Door Hinges

Brand new (not rebuilt) assemblies completely replace worn or broken originals.



- 64-66 . . Mustang Upper, Left / Right3020-401-641L / R . . \$24.95 ea
- 64-66 . . Mustang Lower, Left / Right3020-401-642L / R . . \$29.95 ea



- 67-68 . . Mustang / Cougar Upper, Left / Right . .3021-401-671L / R . . \$64.95 ea
- 67-68 . . Mustang / Cougar Lower, Left / Right . .3021-401-672L / R . . \$69.95 ea



- 69-70 . . Mustang / Cougar Upper, Left / Right . .3022-401-691L / R . . \$69.95 ea
- 69-70 . . Mustang / Cougar Lower, Left / Right . .3022-401-692L / R . . \$69.95 ea
- 71-73 . . Mustang / Cougar Upper, Left / Right . .3023-401-711L / R . . \$59.95 ea
- 71-73 . . Mustang / Cougar Lower, Left / Right . .3023-401-712L / R . . \$99.95 ea



/ Cougar



Door Hinge Repair Kits

Enough bushings and pins to rebuild all 4 door hinges on one car. Pins must be trimmed to fit.

64-73 . . Mustang / Cougar3020-402-64S \$14.95 kit

Door Bumper Kits



Set of 4 rubber bumpers for one car that cushions the door when closed against the body pillar. These eliminate rattles and are usually worn or missing or hard as a rock from age. Made of molded EDPM rubber.

64-68 . . Mustang / Cougar (4 pieces)3020-403-64S \$5.95 kit

69-73 . . Mustang / Cougar (4 pieces)3022-403-69S \$5.95 kit

Courtesy Lamp Switch (Door Jamb)



New reproduction door jamb switches in correct white color for popular models. Use 2 per car.

64-67 . . Mustang / Cougar (use 2) (LH w/o tilt steering wheel)3020-407-641 \$6.95 ea

68-70 . . Mustang / Cougar (use 2) ('68-69 LH w/o tilt steering wheel or '68-70 RH w/o auto seat back latch) 3021-407-68 \$8.95 ea

71-73 . . Mustang / Cougar LH / RH (RH w/ auto seat back latch)3022-407-701 \$4.95 ea

68-73 . . Mustang / Cougar Courtesy Lamp Switch Socket (use 2)3021-407-682 \$6.95 ea

Outside Rear View Mirrors

New die-cast chrome mirrors that mount on the outside of the door. All mirrors include the mounting kit.



64-66 . . Mustang std non-remote, fits LH or RH 3020-410-64 \$24.95 ea

64-66 . . Mustang optional LH remote mirror . . .3020-410-641L \$54.95 ea

64-66 . . Mustang optional RH companion mirror 3020-410-641R \$44.95 ea



67-68 . . Mustang std non-remote, fits LH or RH 3021-410-67 \$39.95 ea

67-68 . . Mustang optional LH remote mirror . . .3021-410-671L \$49.95 ea

67-68 . . Mustang optional RH companion mirror 3021-410-671R \$49.95 ea

71-73 . . Mustang, std non-remote, fits LH only . .3023-410-711L \$39.95 ea



67-68 . . Cougar optional LH remote mirror3321-410-672L \$149.95 ea

67-68 . . Cougar optional RH companion mirror .3321-410-672R \$129.95 ea

68 Cougar std non-remote, fits LH only . .3321-410-68L \$99.95 ea

Door Edge Guard Moldings

New stainless steel moldings for the vertical rear door edge. Sold as an accessory originally, but offered for those wanting to dress up the car with a little more trim.



64-66 . . Mustang, Left / Right pair3020-415-64P \$19.95 pr

67-68 . . Mustang, Left / Right pair3021-415-67P \$14.95 pr

69-70 . . Mustang, Left / Right pair3022-415-69P \$19.95 pr

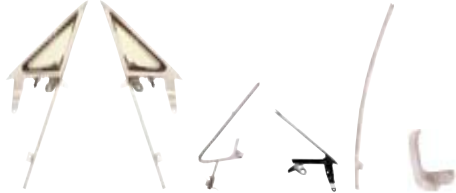
71-73 . . Mustang, Left / Right pair3023-415-71P \$19.95 pr



Mustang

Vent Window Parts

Brand new assemblies replace broken, worn, or missing originals. Each assembly includes the frame, glass, weatherstrip, and handle kit.



- 64-66 . . Mustang Vent Window Assembly, Left / Right
 - Clear Glass3020-419-641LS / RS\$379.95 ea
 - Tinted Glass3020-419-642LS / RS\$379.95 ea
 - Door and Pivot only, Left / Right . . .3020-419-643L / R . . \$44.95 ea
 - Frame only (chrome), Left / Right . . .3020-419-644L / R . \$159.95 ea
 - Clear Glass only3020-419-645L / R . \$39.95 ea
 - Tinted Glass only3020-419-646L / R . \$39.95 ea
 - Glass Run Channel, Left / Right . . .3020-419-647L / R . \$39.95 ea
 - Vent Window Handle Kit, Left / Right 3020-419-64LS / RS. \$14.95 kit



- 67 Mustang / Cougar Vent Window Assembly, Left / Right
 - Clear Glass3021-419-671LS / RS\$399.95 ea
 - Tinted Glass3021-419-672LS / RS\$399.95 ea
 - Vent Window Handle Kit, Left / Right 3021-419-67LS / RS. \$14.95 kit
- 68 Mustang / Cougar Vent Window Assembly, Left / Right
 - Clear Glass3021-419-681LS / RS\$399.95 ea
 - Tinted Glass3021-419-682LS / RS\$399.95 ea
 - Vent Window Handle Kit, Left / Right 3021-419-68LS / RS. \$14.95 kit



- 67-68 . . Mustang / Cougar Vent Window
 - Door and Pivot only, Left / Right . . .3021-419-673L / R . . \$59.95 ea
 - Frame only, Left / Right3021-419-674L / R . \$169.95 ea
 - Clear Glass only, Left / Right3021-419-675L / R . \$39.95 ea
 - Tinted Glass only, Left / Right3021-419-676L R . . \$39.95 ea

Door Glass Assemblies

Each assembly includes glass, frame, and lower channel, ready to install.



- 64-66 . . Mustang Door Glass Track, LH / RH . . .3020-405-641L / R . . \$59.95 ea
- 67-68 . . Mustang (clear glass),
 - Hardtop, Left / Right3021-405-671LS / RS\$259.95 ea
 - Fastback, Left / Right3021-405-672LS / RS\$259.95 ea
 - Convertible, Left / Right3021-405-673LS / RS\$259.95 ea

Door Window Regulators

New assemblies replace worn or broken originals. Be sure to grease these parts when installing before operating to insure long service!



- 64-66 . . Mustang Scissors Assembly,
 - Left / Right3020-420-642L / R . . \$29.95 ea
- 64 Mustang Regulator (with clip-on handle) (up to 3/8/65)
 - Left / Right3020-420-641L / R . . \$24.95 ea
- 65-66 . . Mustang Regulator (with screw-on handle) (from 3/8/65)
 - Left / Right3020-420-65L / R . . \$24.95 ea



- 67 Mustang / Cougar Regulator,
 - Left / Right3021-420-67L / R . . \$64.95 ea
- 68 Mustang / Cougar Regulator,
 - Left / Right3021-420-68L / R . . \$64.95 ea



- 69 Mustang / Cougar Regulator (manual windows),
 - Left / Right3022-420-69L / R . . \$59.95 ea
- 70 Mustang / Cougar Regulator (manual windows),
 - Left / Right3022-420-70L / R . . \$59.95 ea



- 71-73 . . Mustang / Cougar Regulator (manual windows),
 - Left / Right3023-420-711L / R . . \$69.95 ea

/ Cougar



Door Window Crank Handles

Die-cast chrome handles with knobs replace broken, worn, or missing originals. Be sure to order knobs if required!



- 64-65 . . Mustang (up to 3/8/65) (with "horseshoe" clip) (with chrome knob)
 (clip included) 3020-421-641 \$9.95 ea
- 65-67 . . Mustang / Cougar (with screw-on handle) (from 3/8/65) (with chrome
 knob) (screw not included) 3020-421-651 \$9.95 ea
- 68-69 . . Mustang / Cougar (without knob) (to 12/2/68)
 (screw not included) 3021-421-68 \$9.95 ea
- 69-72 . . Mustang / Cougar (without knob) (from 12/2/68 to 10/1/72)
 (screw not included) 3022-421-69 \$9.95 ea
- 73 Mustang / Cougar (with clear knob) (from 4/2/73)
 (screw not included) 3023-421-73 \$9.95 ea



- 65-66 . . Mustang Handle Screw Kit (2 pieces) . . 3020-421-651S \$6.95 kit
- 67 Mustang / Cougar Handle Screw Kit (2 pieces)
 3021-421-671S \$6.95 kit
- 68-73 . . Mustang / Cougar Handle Screw Kit (2 pieces)
 3021-421-681S \$6.95 kit
- 68-72 . . Mustang / Cougar Black Knobs (pair) (to 10/1/72)
 3021-426-68P \$5.95 pr



- 64 Mustang Door / Window Crank Handle Backing Plate,
 (use 4 per car) 3020-421-642 \$2.95 ea
- 65-67 . . Mustang / Cougar Door / Window Crank Handle Backing Plate,
 (use 4 per car) 3020-421-652 \$2.95 ea
- 68 Mustang / Cougar Door / Window Crank Handle Backing Plate,
 (use 4 per car) 3021-421-682 \$2.95 ea
- 69-70 . . Mustang / Cougar Window Crank Handle Backing Plates,
 Pair 3022-421-691P \$9.95 pr
- 64-67 . . Mustang / Cougar Door / Window Crank Handle Spring
 (use 4 per car) 3021-421-643 \$2.95 ea
- 68-73 . . Mustang / Cougar Window Crank Handle Trim Cover
 (use 2 per car) 3021-421-681 1.95 ea

Door Glass Guide Tubes

(photo not available)

Located inside the door shell, these tubes brace the door shell assembly inside.

- 67-68 . . Mustang / Cougar Door Glass Guide,
 Left / Right (lock side) 3021-435-671L / R . . \$99.95 ea
- 69-70 . . Mustang / Cougar Left / Right (use 2 each)
 3022-431-691L / R . . \$27.95 ea

Outside Door Handles

Die-cast chrome handles with knobs, gaskets, and hardware...ready to install!



- 64-66 . . Mustang,
 69-70 . . Mustang LH / RH pair 3020-440-64S \$29.95 set
- 67-68 . . Mustang / Cougar LH / RH pair 3021-440-67S \$29.95 set



- 71-73 . . Mustang / Cougar (gaskets and hardware not included),
 Left / Right 3023-440-71L / R . . \$24.95 ea

Inside Door Handles

Die-cast chrome handles replace broken, pitted, or missing originals. Use 2 per car unless noted.



- 64-65 . . Mustang Handle (with "horseshoe" clip) (up to 3/8/65)
 (clip included) 3020-441-64 \$9.95 ea
- 65-67 . . Mustang / Cougar Handle (uses screw) (from 3/8/65)
 (w/ std. Interior) (screw not included) 3020-441-651 \$9.95 ea
- 65-66 . . Mustang Handle (w/ Deluxe Interior), Left / Right (screw not included)
 Black 3021-441-67L / R . . \$24.95 ea
- Woodgrain 3020-441-652L / R . . \$19.95 ea
- Handle Escutcheons, LH / RH pair . . 3020-441-653P \$19.95 pr
- 65-66 . . Mustang Handle Screw Kit (2 pieces) . . 3020-441-651S \$6.95 kit



- 67 Mustang Deluxe Interior Handle (use 2) 3021-441-672 \$22.95 ea
- 67 Mustang Deluxe Interior Handle Cup (use 2)
 3021-441-673 \$59.95 ea
- 67 Mustang / Cougar Handle Screw Kit (2 pieces)
 3021-441-671S \$6.95 kit
- 67 Cougar XR-7, '68 Mustang / Cougar Handle, Left / Right
 (screw not included) 3021-441-68L / R . . \$19.95 ea
- 68 Mustang / Cougar Handle Screw Kit (2 pieces)
 3021-441-681S \$6.95 kit



- 69 Mustang / Cougar Handle, Left / Right,
 (screw not included) 3022-441-691L / R . . \$19.95 ea
- 69-70 . . Mustang / Cougar Handle Screw Kit (4 pieces)
 3022-441-691S \$6.95 kit
- 69-70 . . Mustang / Cougar Door Handle Cups,
 Standard Interior, Left / Right pair . . 3022-441-694P \$32.95 pr
- 69-70 . . Mustang / Cougar Deluxe Interior
 Door Handle Trim, LH / RH pair 3022-441-695P \$22.95 pr
- 69-70 . . Mustang / Cougar Handle Cup (Deluxe interior) (black) (paint to
 match other interior colors), Left / Right
 '69-early '70 Long 3022-441-692L / R . . \$24.95 ea
- '70 Short 3022-441-702L / R . . \$24.95 ea



Mustang

Inside Door Handles (continued)



- 71-73 .. Mustang / Cougar Handle (std. interior),
..... Left / Right 3023-441-711L / R .. \$14.95 ea
- 71-73 .. Mustang / Cougar Handle (Deluxe interior),
..... Left / Right 3023-441-712L / R .. \$14.95 ea

Door Handle Remote Controls

New mechanisms that the inside door handle attaches to that operates the latch via the connecting rod.



- 65-66 .. Mustang (with screw-on handles) (std. interior) (after 3/8/65)
..... Left / Right 3020-443-651L / R .. \$14.95 ea
- 65-66 .. Mustang (Deluxe interior), Left / Right 3020-443-652L / R .. \$14.95 ea
- 67-68 .. Mustang / Cougar, Left / Right 3021-443-67L / R ... \$14.95 ea

Door Latches

New mechanisms replace broken or missing originals.



- 64-66 .. Mustang Door Latch, Left / Right 3020-444-64L / R ... \$49.95 ea
- 67-68 .. Mustang / Cougar Door Latch (without door warning lights),
..... Left / Right 3021-444-671L / R ... \$59.95 ea
- 69-70 .. Mustang / Cougar Door Latch,
..... Left / Right 3022-444-69L / R ... \$59.95 ea
- 71-73 .. Mustang Door Latch, Left / Right 3023-444-71L / R ... \$59.95 ea

Door Latch Rod Sets

Brand new rod sets to replace broken, bent, or missing rods that connect the remote to the latch and the door lock knob. Sold in sets for one door. Clips are available separately.



- 64-66 .. Mustang Latch Rod Set, Left / Right .. 3020-443-642LS / RS\$29.95 set
- 67-68 .. Mustang / Cougar Latch Rod Set, Left / Right
..... 3021-443-672LS / RS\$29.95 set
- 69-70 .. Mustang / Cougar Latch Rod Set 3022-443-691S \$89.95 set
- 64-66 .. Mustang Latch Rod Retaining Clip (use 12 per car)
..... 3020-444-641 \$1.50 ea
- 67-73 .. Mustang / Cougar Lock Rod Retainer (use as required)
..... 3021-444-671 \$6.95 ea

Door Lock Knobs and Ferrules

Chrome plastic knobs and clear plastic, chrome, or stainless steel ferrules that the door lock knob passes through on the door shell.

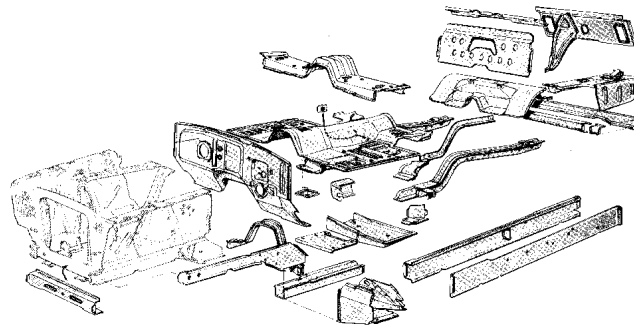


- 64-73 .. Mustang / Cougar Chrome Door Lock Knobs (pair)
..... 64-66 3020-491-65P \$6.95 pr
- 67 3021-491-67P \$7.95 pr
- 68-73 3021-491-68P \$6.95 pr



- 64-73 .. Mustang / Cougar Door Lock Knob Ferrules
..... 64-73 Clear Plastic (use 2) 3020-492-65 \$.95 ea
- 64-69 Chrome (pair) 3020-492-651P \$3.95 pr
- 70-73 Stainless (pair) 3022-492-70P \$7.95 pr

ROCKERS AND FLOORS



Rocker Panels

EDP coated steel assembly includes inner and outer rockers with extensions, ready to install.

- 64-66 .. Mustang Rocker Assembly, Left / Right
..... Coupe / Fastback 3020-470-641LS / RS\$149.95 ea
- Convertible 3020-470-642LS / RS\$199.95 ea
- 67-68 .. Mustang / Cougar Rocker Assembly, Left / Right
..... Coupe / Fastback 3021-470-671LS / RS\$149.95 ea
- Convertible 3021-470-672LS / RS\$199.95 ea




- 64-68 .. Mustang Convertible, Inner,
..... Left / Right 3020-460-641L / R .. \$74.95 ea
- 69-73 .. Mustang Convertible, Inner,
..... Left / Right 3022-460-691L / R .. \$129.95 ea

/ Cougar




Rocker Panels (continued)

- 
- 64-68 . . Mustang / Cougar Front Extension,
..... Left / Right 3020-466-64L / R . . . \$34.95 ea
 - 64-68 . . Mustang / Cougar Outer Rocker,
..... Left / Right 3020-470-64L / R . . . \$59.95 ea

Rocker Panel Moldings

New die-cast chrome and painted moldings with clips included.


- 
- 64-66 . . Mustang Rocker Molding, Left / Right . . 3020-475-64L / R . . . \$44.95 ea
 - 64-66 . . Mustang Clip Set (use 2) 3020-476-64S \$14.95 set
 - 67-68 . . Mustang Rocker Molding, Left / Right . . 3021-475-67L / R . . . \$44.95 ea
 - 69 Mustang Rocker Molding, Left / Right . . 3022-475-69L / R . . . \$59.95 ea



- 70 Mustang Mach I Rocker Molding Set (6 pieces)
..... (thin aluminum above the die casts) 3022-475-701S . . . \$169.95 set
- "mach 1" Rocker Emblem (use 2) . . 3022-475-703S \$74.95 ea
- 71-73 . . Mustang Rocker Moldings, Pair 3023-475-71P \$124.95 pr

Carpet Sill Plates

New polished aluminum trim plates that cover the edge of the carpet in the door opening. Emblems are not included but are available separately below.

- 
- 64-68 . . Mustang / Cougar Coupe / Fastback Sill Plate (use 2)
..... 3020-575-641C \$19.95 ea
 - 64-68 . . Mustang Convertible Sill Plate (use 2) . 3020-575-642C \$19.95 ea
 - 64-68 . . Mustang / Cougar Sill Plate Screw Kit (18 pieces)
..... 3020-575-641S \$12.95 kit
 - 69-70 . . Mustang / Cougar Sill Plate (use 2) . . 3022-575-69C \$19.95 ea
 - 69-70 . . Mustang / Cougar Sill Plate Screw Kit (8 pieces)
..... 3022-575-691S \$6.95 kit
 - 71-73 . . Mustang / Cougar Sill Plate (use 2) . . 3023-575-71C \$27.95 ea
 - 71-73 . . Mustang / Cougar Sill Plate Screw Kit (12 pieces)
..... 3023-575-711S \$6.95 kit



- 64-66 . . Mustang Sill Plate Sticker (use 2) 3020-576-64 \$2.95 ea
- 65-66 . . Shelby GT-350 Sill Plate Sticker (pair) . 3020-576-65P \$19.95 pr
- 67-73 . . Mustang / Cougar Sill Plate Sticker (2) . 3021-576-67 \$1.95 ea
- 68-73 . . Mustang / Cougar Sill Plate Sticker (2) . 3021-576-68 \$1.95 ea



Wheel Opening Molding Sets

New anodized aluminum moldings sold in sets for one car.

- 67-68 . . Mustang 3021-950-67S \$59.95 set
- 69 Mustang Coupe / Convertible 3022-950-691S \$59.95 set
- 69 Mustang Fastback 3022-950-692S \$59.95 set
- 70 Mustang Coupe / Convertible 3022-950-701S \$59.95 set
- 70 Mustang Fastback 3022-950-702S \$59.95 set
- 71-73 . . Mustang 3023-950-71S \$139.95 set

Floor Pan Assemblies



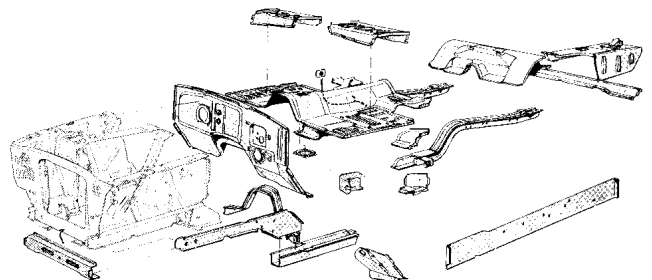
New stamped steel floor pan assemblies are available for most models. Assemblies include a pair of seat risers, 4 steel and 8 rubber floor plugs, and a pair of upper rear torque box plates. Edges at rocker bend UP and must be modified for convertible.



- 64-66 . . Mustang Coupe / Fastback Assembly . . 3020-500-641S . . . \$499.95 ea
- Mustang Convertible Assembly 3020-500-642S . . . \$499.95 ea



- 67-68 . . Mustang Coupe / Fastback Assembly . . 3021-500-671S . . . \$499.95 ea
- 69-70 . . Mustang Coupe / Fastback Assembly . . 3022-500-691S . . . \$499.95 ea

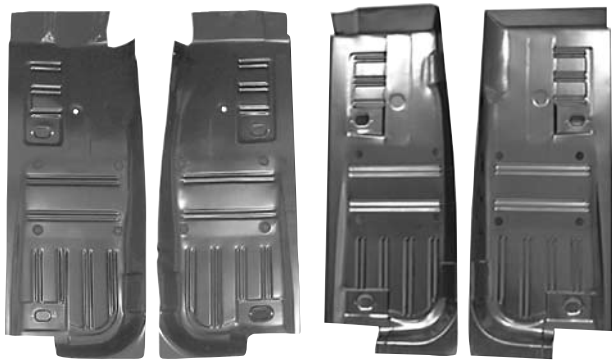




Mustang

Full Floor Pan Patches

New full-length steel floor pans for all popular models. Correct for 1964-66, 1967-68 ribbing is slightly different, and 1969-70 is slightly cosmetically different.



- 64-70 .. Mustang / Cougar Coupe / Fastback, Full-Length Floor Pan Patch
 (23" W x 60" L) (with drain plugs) (rocker lip is bent up)
 Left / Right 3020-500-64L / R ... \$59.95 ea
- 64-70 .. Mustang / Cougar Convertible, Full-Length Floor Pan Patch (24" W x
 60" L) (drain plugs not included) (rocker lip is bent down)
 Left / Right 3020-500-64L / R ... \$59.95 ea



- 71-73 .. Mustang / Cougar, Full-Length Floor Pan Patch (24" W x 60" L)
 (drain plugs included) (EDP coated) (rocker lip bent up)
 Left / Right 3023-500-71L / R ... \$99.95 ea

Partial Floor Pan Patches

EDP coated steel panels replace rusted originals. These are used on cars that do not need complete floor replacement.



- 64-70 .. Mustang / Cougar Front (23" W x 40" L),
 Left / Right 3020-505-64L / R ... \$29.95 ea
- 64-70 .. Mustang / Cougar Short Front (23" W x 22" L),
 Left / Right 3020-506-64L / R ... \$19.95 ea
- 71-73 .. Mustang / Cougar Front (24" W x 40" L),
 Left / Right 3023-505-71L / R ... \$59.95 ea
- 64-70 .. Mustang / Cougar Rear (23" W x 22" L),
 Left / Right 3020-510-64L / R ... \$19.95 ea
- 71-73 .. Mustang / Cougar Rear (24" W x 22" L),
 Left / Right 3023-510-71L / R ... \$59.95 ea



Floor Pan Drain Plugs

Complete set of rubber and steel plugs with screws for all floorpans.

- 64-73 .. Mustang / Cougar 3020-512-64S \$5.95 set

Rubber Grommet Kits

Complete set of rubber grommets and plugs for the body of the car.



- 64-66 .. Mustang (30 pieces) 3020-512-641S \$19.95 kit
- 67-68 .. Mustang / Cougar (29 pieces) 3021-512-671S \$19.95 kit
- 69-70 .. Mustang (44 pieces) 3022-512-691S \$24.95 kit
- 71-73 .. Mustang / Cougar (13 pieces) 3023-512-711S \$17.95 kit

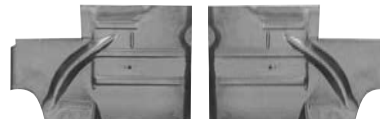


Floor to Firewall Extensions

EDP coated steel panels replace rusted originals, and extend coverage up the lower part of the firewall.

- 64-70 .. Mustang / Cougar (22" W x 18" L),
 Left / Right 3020-515-64L / R ... \$29.95 ea

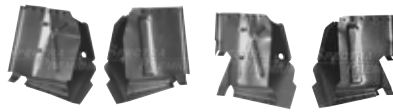
Under Rear Seat Floor Pan Patches



Steel panels replace rusted originals, and extend coverage under the rear seat.

- 64-66 .. Mustang / Cougar (24" W x 17" L),
 Left / Right 3020-511-64L / R ... \$34.95 ea

/ Cougar



Front Torque Boxes

Heavy-gauge steel welded assemblies replace rusted or bent originals.

- 64-70 .. Mustang / Cougar Coupe / Fastback,
..... Left / Right3020-516-64L / R ... \$59.95 ea
- 64-70 .. Mustang / Cougar Convertible,
..... Left / Right3020-516-641L / R .. \$59.95 ea

Convertible Floor Reinforcement Panels



Heavy-gauge steel panels used to reinforce the convertible floor pans.

- 64-70 .. Mustang / Cougar Convertible,
..... Left / Right3020-517-64L / R ... \$59.95 ea
- 64-70 .. Mustang / Cougar Convertible Center ..3020-517-641 \$49.95 ea



- 64-66 .. Mustang Floor Pan Support3020-517-642 \$79.95 ea
- Floor Pan Support Bracket3020-517-643 \$69.95 ea
- 67-68 .. Mustang / Cougar Floor Pan Support ..3021-517-671 \$69.95 ea
- 67-70 .. Floor Pan Support Bracket3021-517-672 \$49.95 ea



Seat Platforms

Heavy-gauge steel panels used between the seat tracks and the floor pan.

- 64-68 .. Mustang / Cougar Coupe / Fastback,
..... Left / Right3020-518-641L / R .. \$49.95 ea
- 64-68 .. Mustang Convertible3020-518-642 \$149.95 ea
- 69-70 .. Mustang Fastback, Left / Right3022-518-692L / R .. \$64.95 ea

Shift Boots and Retainers

Reproduction rubber shift boots with correct material and grain and retainers for the manual transmission shifter where it goes through the floor.



- 64-68 .. Mustang / Cougar Shift Boot3020-508-641 \$9.95 ea
- 64-68 .. Mustang / Cougar Shift Boot Retainer ..3020-508-642 \$14.95 ea
- 69-70 .. Mustang / Cougar Shift Boot (exc. Hurst)
.....3022-508-691 \$22.95 ea
- 70 .. Mustang / Cougar Shift Boot (Hurst) ...3022-508-701 \$22.95 ea
- 69-70 .. Mustang / Cougar Shift Boot Retainer ..3022-508-692 \$19.95 ea

WINDSHIELD AND ROOF

Windshield Header Moldings

Polished or satin stainless molding on top of the windshield header panel for convertibles.

- 64-67 .. Mustang Convertible (polished)3020-480-64 \$54.95 ea
- 68 .. Mustang Convertible (satin)3021-480-68 \$74.95 ea

Convertible Top Latches

New reproduction components to make your top latches like new!



- 64-68 .. Top Latch Assembly, Left / Right3020-482-641L / R .. \$189.95 ea
- 64-66 .. Top Latch Hooks, Pair3020-482-642P \$12.95 pr
- 67-73 .. Top Latch Hooks, Pair3021-482-672P \$12.95 pr
- 64-68 .. Top Latch Dowel Pins, Pair3020-482-643P \$19.95 pr
- 64-67 .. Top Latch Mount Bases, Pair3020-482-644P \$169.95 pr



- 64-65 .. Top Tension Cables, Pair (stud type) ...3020-682-641P \$22.95 pr
- 65-68 .. Top Tension Cables, Pair (spring type) .3020-682-65P \$22.95 pr
- 69-70 .. Top Tension Cables, Pair3022-682-69P \$22.95 pr
- 64-68 .. Manual Top Hold Down Brackets, pair ..3020-682-642P \$29.95 pr

Windshield Reveal Moldings

Bright stainless steel moldings that surround the windshield.



- 64-68 .. Mustang / Cougar Coupe / Fastback (5-piece set)
.....3020-525-64S \$99.95 set
- 64-68 .. Mustang Convertible Pillar Moldings,
..... Left / Right Pair3020-525-642P \$129.95 pr
- 64 .. Mustang Coupe Molding Clip Kit (44 pieces)
.....3020-525-643S \$17.95 kit
- 64 .. Mustang Convertible Molding Clip Kit (36 pieces)
.....3020-525-644S \$17.95 kit
- 65-68 .. Mustang / Cougar Coupe / Fastback Molding Clip Kit (22 pieces)
.....3020-525-651S \$14.95 kit
- 65-68 .. Mustang Convertible Molding Clip Kit (22 pieces)
.....3020-525-652S \$14.95 kit



Mustang

Windshield Reveal Moldings (continued)



- 69-70 .. Mustang / Cougar Coupe (5-piece set) .3022-525-691S . . . \$154.95 set
- 69-70 .. Mustang Fastback (5-piece set)3022-525-692S . . . \$149.95 set
- 69-70 .. Mustang / Cougar Coupe / Fastback Molding Clip Kit (13 pieces)
 (top and sides only)3022-525-693S \$9.95 kit
- 69-70 .. Mustang / Cougar Convertible Molding Clip Kit (11 pieces) (top and
 sides only)3022-525-694S \$12.95 kit



- 71-73 .. Mustang / Cougar Coupe Top / Side Moldings,
 Left / Right pair3023-525-711P \$149.95 pr
- 71-73 .. Mustang / Cougar Coupe / Fastback Molding Clip Kit (16 pieces)
3023-525-714S \$12.95 kit
- 71-73 .. Mustang / Cougar Convertible Molding Clip Kit (9 pieces)
3023-525-715S \$6.95 kit

Drip Rail Molding Sets

New anodized aluminum or stainless steel moldings sold in sets for one car. These are the moldings that attach along the roof line and keep water from dripping on your head when exiting the car in the rain.



- 64-68 .. Mustang Coupe (2-pieces)3020-925-64S \$49.95 set
- 65-66 .. Mustang Fastback (2-pieces)3020-925-65S \$69.95 set



- 67-68 .. Mustang Fastback (2-pieces)3021-925-672S \$69.95 set



- 69-70 .. Mustang Coupe (4-pieces) (includes 1/4 glass moldings)
3022-925-691S \$159.95 set
- 69-70 .. Mustang Fastback (6-pieces)3022-925-693S \$159.95 set

Vinyl Top Molding Sets

New stainless steel moldings sold in sets for one car.



- 64-66 .. Mustang Coupe (2-pieces)3020-927-64S \$49.95 pr
- 67-68 .. Mustang Coupe (2-pieces)3021-927-67S \$59.95 pr

Rear Window Reveal Moldings

Stainless steel moldings that trim the rear window opening.



- 64-66 .. Mustang Coupe (6-piece set)3020-715-64S \$84.95 set
- 64 Mustang Coupe Molding Clip Kit (38 pieces)
3020-715-641S \$17.95 kit
- 65-66 .. Mustang Coupe Molding Clip Kit (19 pieces)
3020-715-651S \$12.95 kit
- 65-66 .. Mustang Fastback (4-piece set)3020-715-65S \$89.95 set
- 65-66 .. Mustang Fastback Molding Clip Kit (22 pieces)
3020-715-652S \$14.95 kit



- 67-68 .. Mustang Coupe (6-piece set)3021-715-671S \$179.95 set
- 67-68 .. Mustang Coupe Molding Clip Kit (19 pieces)
3021-715-673S \$12.95 kit
- 67-68 .. Mustang Fastback (6-piece set)3021-715-672S \$99.95 set
- 67-70 .. Mustang Fastback Molding Clip Kit (27 pieces)
3021-715-674S \$17.95 kit



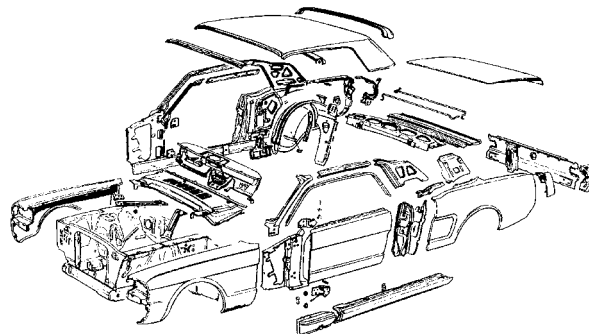
- 69-70 .. Mustang Fastback (4-piece set)3022-715-692S \$49.95 set
- 71-73 .. Mustang Fastback (4-piece set)3023-715-712S \$179.95 set
- 71-73 .. Mustang Coupe Molding Clip Kit (18 pieces)
3023-715-713S \$12.95 kit
- 71-73 .. Mustang Fastback Molding Clip Kit (21 pieces)
3023-715-714S \$12.95 kit



Rear Window Louver Kits

Excellent reproduction of the factory style rear window louvers available on fastback models. Complete kit includes louvers, hinges, latches, gaskets, and pads.

- 69-70 .. Mustang Fastback3022-717-69S \$459.95 kit



/ Cougar



QUARTER PANELS



Factory Style Quarter Panels

New EDP coated steel panels completely replace the factory quarters at the factory seams. All quarters are shipped truck freight.



64-66 . . Mustang Coupe, Left / Right3020-601-64L / R . . \$149.95 ea
 Mustang Convertible, Left / Right3020-602-64L / R . . \$149.95 ea



65-66 . . Mustang Fastback (2-piece design with separate sail panel),
 Left / Right3020-601-65L / R . . \$259.95 ea
 (1-piece design with separate tail lamp panel),
 Left / Right3020-601-651L / R . . \$334.95 ea



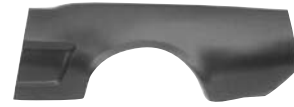
67 Mustang Coupe, Left / Right3021-601-671L / R . . \$279.95 ea
 Mustang Convertible, Left / Right3021-602-67L / R . . \$279.95 ea



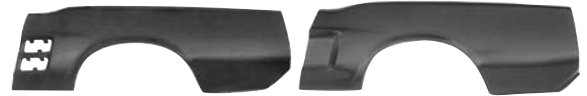
68 Mustang Coupe, Left / Right
 early style w/ marker hole3021-601-681AL / R \$279.95 ea
 late style w/o marker hole3021-601-681L / R . . \$279.95 ea
 Mustang Convertible, Left / Right
 early style w/ marker hole3021-602-681L / R . . \$279.95 ea
 late style w/o marker hole3021-602-682L / R . . \$279.95 ea

Quarter Panel Skins

New EDP coated steel panels replace the side of the quarter panels. Does not include the door jamb, does not extend to the trunk opening or the sail panel. All quarter skins are shipped truck freight.



64-66 . . Mustang (24" high), Left / Right3020-600-64L / R . . \$69.95 ea



67 Mustang (with holes for side ornaments), 24" high,
 Left / Right3021-600-67L / R . . \$99.95 ea

68 Mustang (without holes for side ornaments), 24" high
 Left / Right (late style no marker)3021-600-68L / R . . \$69.95 ea



69 Mustang Coupe / Convertible (26" high),
 Left / Right3022-600-691L / R . . \$99.95 ea

70 Mustang Coupe / Convertible (26" high),
 Left / Right3022-600-701L / R . . \$109.95 ea



69-70 . . Mustang Fastback (24" high) (modify for cars with side scoop and
 side marker), Left / Right3022-600-692L / R . . \$99.95 ea



71-73 . . Mustang Coupe / Convertible (25" high),
 Left / Right3023-600-711L / R . . \$79.95 ea

71-73 . . Mustang Fastback (23" high),
 Left / Right3023-600-712L / R . . \$79.95 ea

Lower Rear Quarter Panel Patches

Use to repair a common rust area on the lower rear section of the quarters. Eliminates the need for entire replacement for light rust issues.



64-66 . . Mustang (13.5" H x 26" L), Left / Right3020-690-64L / R . . \$29.95 ea
 67-68 . . Mustang (14" H x 25.75" L), Left / Right3021-690-67L / R . . \$29.95 ea



69-70 . . Mustang Coupe / Convertible (13.5" H x 24" L),
 Left / Right3022-690-691L / R . . \$44.95 ea

69-70 . . Mustang Fastback (13" H x 21" L),
 Left / Right3022-690-692L / R . . \$44.95 ea



71-73 . . Mustang (17.5" H x 27" L), Left / Right3023-690-71L / R . . \$49.95 ea



Mustang

Inner Quarter Panels

Steel panels that form the inner part of the quarter panel.



64-66 . . Mustang Convertible, Left / Right3020-604-642L / R . \$114.95 ea

Door Lock Strikers

Bolt assembly that the latch hits when the door is closed. Attaches to door jamb.



64-66 . . Mustang (use 2)3020-606-64S \$12.95 ea
 67 Mustang / Cougar (use 2)3021-606-67S \$14.95 ea
 68-70 . . Mustang / Cougar (use 2)3021-606-68S \$14.95 ea
 71-73 . . Mustang / Cougar (use 2)3023-606-72 \$14.95 ea

Quarter Panel Rear Extensions

New die-cast pot-metal panels cap the end of the quarters. The studs are commonly broken on these or they are damaged from a collision.



64-66 . . Mustang, Left / Right3020-611-64L / R . . \$49.95 ea
 Mustang Extension Seals (pair)3020-611-641P \$5.95 pr



67-68 . . Mustang Coupe / Convertible
 (w/o molding holes), Left / Right . . .3021-611-671L / R . . \$59.95 ea
 (w/ molding), Left / Right3021-611-672L / R . . \$64.95 ea
 Mustang Fastback
 (w/o molding holes), Left / Right . . .3021-611-673L / R . . \$59.95 ea
 (w/ molding), Left / Right3021-611-674L / R . . \$64.95 ea
 Mustang Extension Seals (pair)3021-611-671P \$5.95 pr



69 Mustang Coupe / Convertible, Left / Right
3022-611-691L / R . . \$129.95 ea
 Mustang Fastback, Left / Right3022-611-692L / R . . \$129.95 ea
 70 Mustang Fastback, Left / Right3022-611-702L / R . . \$129.95 ea



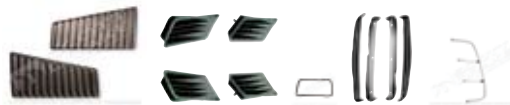
71-73 . . Mustang Coupe / Convertible,
 Left / Right3023-611-711L / R . . \$99.95 ea
 71-73 . . Mustang Fastback, Left / Right3023-611-712L / R . . \$149.95 ea
 69-73 . . Mustang Extension Seals (pair)3022-611-691P \$5.95 pr

Quarter Panel Ornaments

New chromed die-cast and painted pot-metal ornaments for the "cove" of the quarter panels or the sail panel area. Sold in matched pairs.



64-65 . . Mustang Ornaments, Left / Right Pair . .3020-615-64P \$39.95 pr
 66 Mustang Ornaments, Left / Right Pair . .3020-615-66P \$29.95 pr
 Ornament Hardware Kit (10 pieces) 3020-615-66S \$6.95 kit



67-68 . . Mustang Fastback Sail Panel Vent Assemblies,
 Left / Right pair3021-615-673S \$429.95 pr
 67 Mustang Ornaments, Set of 4 Pieces . .3021-615-67S \$179.95 set
 Ornament Hardware Kit (8 pieces) . .3021-615-671S \$6.95 kit
 Ornament Seals (4 pieces)3021-615-672S \$5.95 set
 68 Mustang Ornaments, Set of 4 Pieces . .3021-615-68S \$179.95 set
 Ornament Hardware Kit (6 pieces) . .3021-615-681S \$6.95 kit
 69 Mustang Ornaments, Pair3022-615-69P \$149.95 pr



67-68 . . Cougar Quarter Emblems, pair,
 "COUGAR"3321-615-67P \$224.95 pr
 68 Mustang GT/CS Quarter Emblem (use 2)
 "California Special"3021-615-682 \$59.95 ea
 69-70 . . Mustang Fastback Quarter Sail Ornaments,
 Running Horse, Left / Right pair . . .3022-615-691P . . . \$169.95 pr
 69-70 . . Shelby GT Quarter Sail Ornament,
 Coiled Snake (use 2)3022-615-692 \$29.95 ea
 69-70 . . Shelby GT Quarter Sail Ornament,
 "SHELBY" (use 2)3022-615-693 \$15.95 ea

Don't even THINK...

...of replacing quarter panels while leaving old rusted wheelhouses in place. Many people have made this mistake over the years, and end up having to do their car over again. The original Outer Wheelhouse is welded onto the quarter panel at the factory, and the seam forms a natural place to trap moisture and debris. Whenever you see a car with rust around the wheel well opening, you know that BOTH the quarter panel and the Outer Wheelhouse are badly rusted. While the wheelhouse is indeed hidden behind the quarter panel, it is the foundation that your new quarter panel must be welded to. So, rusted and weakened steel may not hold your quarter panel properly. Moreover, you may soon have to resort to repairing rust holes again...this time in the wheelhouse. And where is the first place prospective buyers will probe their fingers into while searching for evidence of rust repair? Under the wheel well opening, of course!



/ Cougar



Quarter Window Assemblies

Instead of trying to restore several worn original parts, just replace the entire assembly...it's cheaper! Each includes frame, molding, weatherstrip and glass.



- 64-66 . . Mustang Coupe Assembly, Left / Right
 - Clear Glass 3020-663-641L/RS \$399.95 ea
 - Tinted Glass 3020-663-642L/RS \$399.95 ea
 - Frame Only 3020-663-643L / R . \$299.95 ea
 - Clear Glass Only 3020-663-644L / R . \$59.95 ea
 - Tinted Glass Only 3020-663-645L / R . \$69.95 ea
- 67-68 . . Mustang Coupe Assembly, Left / Right
 - Clear Glass 3021-663-671L/RS \$399.95 ea
 - Tinted Glass 3021-663-672L/RS \$399.95 ea
 - Frame only 3021-663-673L / R . \$199.95 ea
 - Glass Channel, Left / Right 3021-664-672L / R . \$79.95 ea
 - Clear Glass only 3021-663-674L / R . \$49.95 ea
 - Tinted Glass only 3021-663-675L / R . \$49.95 ea

Quarter Glass Moldings

New chrome moldings for between the door glass and quarter glass.

- 64-66 . . Mustang Coupe, Left / Right 3020-665-641L / R . \$49.95 ea
- 67-68 . . Mustang Coupe, Left / Right 3021-665-671L / R . \$39.95 ea
- 69-70 . . Mustang Fastback, Left / Right 3022-665-69L / R . \$64.95 ea

Quarter Window Regulators

Brand new assemblies replace broken or worn originals. Be sure to buy new handles for complete replacement.



- 64-66 . . Mustang Coupe / Convertible,
 - Left / Right 3020-669-641L / R . \$69.95 ea
- 67-68 . . Mustang / Cougar Coupe / Convertible,
 - Left / Right 3021-669-67L / R . \$69.95 ea
- 69-70 . . Mustang / Cougar Coupe / Convertible (manual),
 - Left / Right 3022-669-69L / R . \$59.95 ea
- 71-73 . . Mustang / Cougar Coupe / Convertible (manual),
 - Left / Right 3023-669-711L / R . \$69.95 ea

Quarter Window Crank Handles

New die-cast chrome handles. Be sure to order new knobs if required!



- 64-65 . . Mustang (up to 3/8/65) (with chrome knob) (use 2)
 - (includes clip) 3020-669-642 \$9.95 ea
- 65-67 . . Mustang / Cougar (from 3/8/65) (with chrome knob) (use 2)
 - (includes set screw) 3020-669-65 \$9.95 ea
- 64-67 . . Mustang / Cougar Handle Backing Plate
 - (use 2) 3020-669-643 \$2.95 ea
- 68-70 . . Mustang / Cougar (without knob) (use 2)
 - (includes set screw) 3021-669-681 \$9.95 ea
- 68-72 . . Mustang / Cougar Black Knobs (pair) . . 3021-426-68P \$5.95 pr

What's that black coating on most Goodmark® sheetmetal?

It's called EDP, which stands for Electro Deposit Primer, and it makes an excellent primer under your paint job.

As you probably know, factory paint back in the '60's and '70's was usually just sprayed onto the surfaces that could be reached by a spray gun. But this left many blind areas behind braces, etc, completely bare of any paint protection. Hence, many cars rusted within a few years. But EDP coating is applied electrically, almost like a plating process. The excellent rust-resistant coating reaches every nook and cranny, for unparalleled corrosion resistance.

The only surface preparation required is a light scuffing of the surface for better paint adhesion. No stripping is necessary. The panel is protected from rust as long as the EDP coating remains under your paint.

This is one more way that Goodmark® goes the extra mile for our customers!



Mustang

Rear Wheelhouse Assemblies and Parts

EDP coated welded inner and outer panel assemblies. Modify slightly on top for convertible models. We also offer inner and outer panels separately for those who wish to assemble the wheelhouse themselves.



- 64-66 . . Mustang Inner / Outer Assembly,
..... Left / Right 3020-670-64LS / RS \$159.95 ea
- 67-68 . . Mustang Inner / Outer Assembly,
..... Left / Right 3021-670-671LS / RS \$159.95 ea
- 69-70 . . Mustang Inner / Outer Assembly,
..... Left / Right 3022-670-69LS / RS \$159.95 ea



- 64-70 . . Mustang / Cougar Inner, Left / Right . . . 3020-670-64L / R . . . \$49.95 ea
- 71-73 . . Mustang / Cougar Inner, Left / Right . . . 3023-670-71L / R . . . \$74.95 ea



- 64-66 . . Mustang Outer, Left / Right 3020-675-64L / R . . . \$39.95 ea
- 67-68 . . Mustang Outer, Left / Right 3021-675-67L / R . . . \$49.95 ea



- 69-70 . . Mustang Outer, Left / Right 3022-675-69L / R . . . \$69.95 ea
- 71-73 . . Mustang Outer, Left / Right 3023-675-71L / R . . . \$74.95 ea

TRUNK FLOOR AND DECK LID



Trunk Lids



EDP coated assembly that covers the trunk opening. All trunk lids are shipped Truck Freight.



- 64-66 . . Mustang Coupe / Convertible 3020-700-64 \$169.95 ea
- 1mm heavy gauge - **Best Quality!** . . . 3020-700-64A \$199.95 ea
- 3020-700-65 \$169.95 ea
- 1mm Heavy Gauge - **Best Quality!** . . . 3020-700-65A \$179.95 ea



- 67-68 . . Mustang Coupe / Convertible 3021-700-671 \$149.95 ea
- 67-68 . . Mustang Fastback - Std. Quality 3021-700-672 \$149.95 ea
- 1mm Heavy Gauge - **Best Quality!** . . . 3021-700-672A \$179.95 ea



- 69-70 . . Mustang Fastback - Std. Quality 3022-700-692 \$179.95 ea
- 1mm Heavy Gauge - **Best Quality!** . . . 3022-700-692A \$199.95 ea



- 71-73 . . Mustang Coupe / Convertible 3023-700-711 \$229.95 ea
- 71-73 . . Mustang Fastback 3023-700-712 \$229.95 ea

Trunk Rubber Bumpers

These little rubber bumpers cushion the trunk lid when closed and prevent rattles.



- 64-66 . . Mustang (pair) 3020-707-64P \$5.95 pr
- 67-70 . . Mustang (pair) 3021-707-67P \$5.95 pr

1 Cougar



Rear Spoilers

Complete rear spoiler assemblies include fiberglass wing, pedestals, mounting pads, and hardware to install.



- 69-70 .. Mustang Fastback3022-701-69S.....\$164.95 set
- Deck Lid Mount Brackets (pair).....3022-701-691P.....\$39.95 pr
- 71-73 .. Mustang Fastback3023-701-71S.....\$164.95 set

Trunk Lid Emblems

New die-cast and painted emblems for the trunk lid of popular models.



- 67-72 .. "MUSTANG" Coupe Trunk Letter Set ..3020-130-654S.....\$14.95 set
- 67 .. Shelby GT-350 Trunk Emblem.....3021-058-672.....\$69.95 ea
- 68 .. Shelby GT-500 Trunk Emblem.....3021-058-673.....\$69.95 ea
- 70 .. Mustang "Mach 1" Trunk Emblem3022-702-70S.....\$64.95 ea

Trunk Lid Hinges

New trunk lid hinges replace rusted or bent originals.



- 65-66 .. Mustang Fastback, Left / Right pair ...3020-704-65P.....\$129.95 pr
- 67-68 .. Mustang Fastback, Left / Right pair ...3021-704-674P.....\$119.95 pr
- 69-70 .. Mustang Fastback, Left / Right pair ...3022-704-692P.....\$149.95 pr

Trunk Latches

Complete assemblies replace worn or broken originals.



- 64-66 .. Mustang Latch3020-705-64.....\$34.95 ea
- 67-73 .. Mustang / Cougar Latch.....3021-705-67.....\$39.95 ea
- 64-66 .. Mustang Trunk Lock Cylinder Sleeve Kit
.....3020-705-642S.....\$12.95 kit
- 64-66 .. Mustang Trunk Lock Housing Spacer ..3020-705-643.....\$11.95 ea



- 64-66 .. Mustang Striker3020-705-641.....\$10.95 ea
- 67-68 .. Mustang Striker3021-705-671.....\$14.95 ea
- 69-70 .. Mustang Striker3022-705-691.....\$14.95 ea

Luggage Racks

Complete chrome steel assembly ready to install.



- 64-68 .. Mustang Coupe / Convertible3020-709-64S.....\$149.95 ea

Rear Trunk Corners

These little EDP coated panels fill the gap between the tail panel and the quarter panel.



- 64-66 .. Mustang Coupe / Convertible,
..... Left / Right.....3020-706-64L / R ...\$44.95 ea
- 65-66 .. Mustang Fastback, Left / Right3020-706-65L / R ...\$34.95 ea
- 67-68 .. Mustang Coupe / Convertible,
..... Left / Right.....3021-706-671L / R ...\$14.95 ea
- 67-68 .. Mustang Fastback, Left / Right3021-706-672L / R ...\$34.95 ea

Deck Filler Panels

EDP coated panels fill between the trunk lid and the rear window.



- 64-66 .. Mustang Coupe3020-710-641.....\$59.95 ea
- 64-66 .. Mustang Convertible3020-710-642.....\$29.95 ea



- 65-66 .. Mustang Fastback3020-710-65.....\$99.95 ea
- 67-68 .. Mustang Coupe3021-710-671.....\$74.95 ea



- 67-68 .. Mustang Fastback3021-710-672.....\$89.95 ea
- 69-70 .. Mustang Fastback3022-710-692.....\$79.95 ea

Deck Well Moldings

Moldings for the convertible top well. Sold as a matched pair for the sides and the long piece by itself.



- 64-66 .. Mustang Convertible
..... Center.....3020-711-641.....\$59.95 ea
- Sides, Left / Right pair.....3020-711-642P.....\$99.95 pr

Rear Shock Panels and Access Plugs

Steel panel welds over top of rear axle to trunk floor. Rubber plugs in the trunk floor that allow access to the rear shock absorber nuts. Use 2 per car.




- 64-68 .. Mustang / Cougar3020-740-641.....\$9.95 ea
- 64-70 .. Mustang / Cougar Rear Shock Panel ..3020-740-642.....\$149.95 ea





Mustang

Trunk Lid Moldings

New stainless or anodized aluminum moldings that trim the rear edge of the deck lid. Extensions on the rear of the quarters are also listed here. Clips are included with all moldings.

- 
- 67-68 . . . Mustang Coupe / Convertible (except GT/CS or Shelby)
 - Center3021-775-671 \$29.95 ea
 - Outer, Left / Right3021-775-671L / R .. \$14.95 ea

- 
- 67-68 . . . Mustang Fastback (except Shelby)
 - Center3021-775-672 \$17.95 ea
 - Outer, Left / Right3021-775-672L / R .. \$14.95 ea

- 
- 69 Mustang Coupe / Convertible (except Shelby)
 - Center3022-775-691 \$59.95 ea
 - Outer, Left / Right3022-775-691L / R .. \$24.95 ea

Trunk Floor Side Panels and Drop-Offs



- EDP coated panels that complete the trunk floor and drop-off.
- 64-70 . . Mustang / Cougar Trunk Floor Side Panel,
 - Left / Right3020-720-64L / R ... \$24.95 ea
 - Best Quality (heavy gauge), Left / Right
 -3020-720-641L / R ... \$49.95 ea
 - 64-70 . . Mustang / Cougar Drop-Off section only,
 - Left / Right3020-735-64L / R ... \$14.95 ea
 - 71-73 . . Mustang / Cougar Drop-Off, Left / Right 3023-735-71L / R ... \$19.95 ea

Trunk Braces

Braces used in the trunk for the bumper mount reinforcement and trunk latch supports.



- 64-66 . . Mustang Trunk Latch Support Brace
- Coupe / Fastback3020-721-641 \$32.95 ea
- Convertible3020-721-642 \$32.95 ea
- 67-68 . . Mustang Trunk Latch Support Brace ...3021-721-67 \$39.95 ea
- 69 Mustang Trunk Latch Support Brace ...3022-721-691 \$34.95 ea



- 64-66 . . Mustang Inner Bumper Trunk Brace,
- Left / Right3020-721-64L / R ... \$14.95 ea
- 67-68 . . Mustang Inner Bumper Trunk Brace,
- (use 2)3021-721-671 \$24.95 ea
- 69-70 . . Mustang Inner Bumper Trunk Brace,
- (use 2)3022-721-69 \$24.95 ea



Trunk Floors

Die-stamped steel floor for models that don't use the gas tank as the trunk floor. Trunk floors are shipped truck freight.

- 71-73 . . Mustang Trunk Floor (54" W x 38" L) ...3023-725-71 \$159.95 ea



Spare Tire Hold-Down Set

EDP coated threaded round disc, J-Bolt, and Wing Nut that retains the spare tire.

- 64-67 . . Mustang / Cougar Spare Retainer Set. .3020-726-64S \$9.95 set
- Round Disc only3020-726-641 \$6.95 ea

GAS TANKS AND HARDWARE

Replace that rusty, muck-filled old gas tank in your Mustang or Cougar, with brand new high quality reproduction steel Gas Tanks from Goodmark®. There is no cost-efficient way to properly restore the outside appearance of a gas tank, and the rust particles, sludge, and stale gas residue inside are just carburetor problems waiting to happen. While you're at it, be sure to replace rusted or weakened old straps, brackets, bolts, and gas caps. Go for it.

Gas Tank Straps and Mounting Hardware



Straps retain the gas tank to the trunk floor. Hardware kits mount the tank to the floor.

- 64-67 . . Mustang / Cougar Tank Hardware Kit (11 pieces)
-3020-749-64S \$12.95 kit
- 68-69 . . Mustang / Cougar Tank Hardware Kit (11 pieces)
-3021-749-68S \$12.95 kit
- 70 Mustang / Cougar Tank Hardware Kit (11 pieces)
-3022-749-70S \$12.95 kit
- 71-73 . . Mustang / Cougar (pair)3023-749-71P \$39.95 pr
- 71-73 . . Mustang / Cougar Strap Hardware Kit (4 pieces)
-3023-749-71S \$12.95 kit

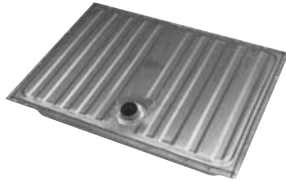


/ Cougar

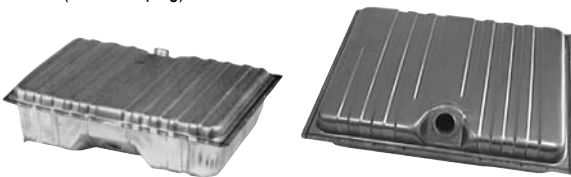


Gas Tanks

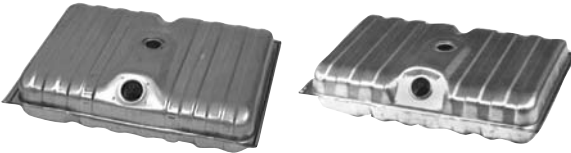
All of our tanks are made in North America from Niterne steel for superior rust resistance. These are not the cheaper imported tanks that use cheaper steel!



- 64-68 . . Mustang / Cougar (w/ drain plug)3020-750-64 \$109.95 ea
 (w/o drain plug)3020-750-641 \$109.95 ea



- 69 Mustang / Cougar (w/ drain plug)3022-750-69 \$149.95 ea
 (w/o drain plug)3022-750-691 \$149.95 ea
 70 Mustang / Cougar
 (w/ drain plug) (w/o EEC)3022-750-70 \$149.95 ea
 (w/o drain plug) (w/o EEC)3022-750-701 \$149.95 ea



- 71-73 . . Mustang3023-750-71 \$149.95 ea
 71-73 . . Cougar3323-750-71 \$149.95 ea

Gas Filler Necks

Use these necks to replace rusted or missing originals.



- 64-66 . . Mustang3020-753-64 \$29.95 ea
 67-68 . . Mustang3021-753-67 \$24.95 ea
 69 Mustang3022-753-69 \$24.95 ea
 70 Mustang3022-753-70 \$24.95 ea
 64-70 . . Mustang Filler Neck to Body Gasket . . .3020-753-641 \$4.95 ea

Gas Tank Sending Units

New aftermarket sending units to use with a new gas tank. Each sender includes sock and seal. None of our units feature the low fuel warning provision.



- 64-68 . . Mustang / Cougar (w/o low fuel)3020-755-64 \$29.95 ea
 69 Mustang / Cougar (w/o low fuel)3022-755-69 \$29.95 ea
 70 Mustang / Cougar (w/o low fuel)3022-755-70 \$29.95 ea
 71-73 . . Mustang / Cougar (w/o low fuel)3023-755-711 \$29.95 ea

Gas Caps

New filler caps replace broken or missing originals.



- 64 Mustang (without cable)3020-757-64 \$49.95 ea
 65 Mustang (with cable)3020-757-65 \$49.95 ea
 65 Mustang T5 (export) (with cable)3020-757-651 \$69.95 ea
 66 Mustang (except GT) (with cable)3020-757-661 \$49.95 ea
 66 Mustang GT (with cable)3020-757-662 \$59.95 ea
 66 Shelby GT-350 (with cable)3020-757-663 \$69.95 ea



- 64-73 . . Mustang Locking Cap (Accessory Type)
3020-757-642 \$79.95 ea
 67 Mustang (except GT) (twist off)3021-757-671 \$59.95 ea
 67 Mustang GT (twist off)3021-757-672 \$69.95 ea
 67 Mustang (except GT) (pop-off)3021-757-673 \$149.95 ea
 67 Mustang GT (pop-off)3021-757-674 \$149.95 ea
 67-68 . . Mustang (pop-off style) (w/o emblem) . . .3021-757-676 \$69.95 ea



- 68 Mustang (except GT) (twist off)3021-757-681 \$59.95 ea
 68 Mustang (except GT) (pop-off)3021-757-683 \$149.95 ea
 68 Mustang GT (pop-off)3021-757-684 \$149.95 ea
 69-70 . . Mustang (std) (twist off) (w/o EEC) . . .3022-757-691 \$59.95 ea
 69 Mustang Mach 1 (pop-off)3022-757-693 \$149.95 ea
 69 Mustang Mach 1 (pop-off) (w/o logo) . . .3022-757-695 \$69.95 ea



- 70 Mustang Mach 1 (pop-off) (w/o EEC) . . .3022-757-701 \$149.95 ea
 70 Mustang Mach 1 (pop-off) (w/o logo) (w/o EEC)
3022-757-705 \$69.95 ea
 70 Mustang (std) (twist off) (w/ EEC)3022-757-702 \$59.95 ea
 71-73 . . Mustang (std) (twist off) (w/o cable) . . .3023-757-711 \$59.95 ea
 71-73 . . Mustang (std) (twist off) (w/ cable) . . .3023-757-711A \$59.95 ea
 71-73 . . Mustang Mach 1 (pop off)3023-757-712 \$139.95 ea



- 64-70 . . Mustang (w/o emblem) (screw-on style) (w/o EEC)
3020-757-641 \$9.95 ea
 64-70 . . Mustang (w/o emblem) (screw-on style) (w/o EEC) (chrome)
4010-757-621 \$19.95 ea
 71-73 . . Mustang (screw-on style) (w/ EEC) (w/o emblem)
3023-757-713 \$29.95 ea
 67-70 . . Cougar (w/o EEC)4041-757-581 \$12.95 ea
 70 Cougar (w/ EEC)4030-757-641 \$9.95 ea
 71-73 . . Cougar3323-757-711 \$9.95 ea



Mustang



Rear Upper Torque Boxes

Heavy-gauge die-stamped steel plate that makes the upper part of the rear torque box.

64-73 . . Mustang Coupe / Fastback, Left / Right 3020-760-641L / R . . \$34.95 ea

Rear Frame Rails

Heavy-gauge die-stamped steel rails that support the rear body structure. Rear torque boxes and axle mount brackets are included, but upper rear torque box is not included.



64-68 . . Mustang / Cougar (except Convertible) Rear Frame Rail,
Left / Right 3020-770-641L / R . . \$259.95 ea

64-68 . . Mustang Convertible Rear Frame Rail,
Left / Right 3020-770-642L / R . . \$259.95 ea

69-70 . . Mustang / Cougar (except Convertible) Rear Frame Rail,
Left / Right 3022-770-691L / R . . \$329.95 ea

69-70 . . Mustang / Cougar Convertible Rear Frame Rail,
Left / Right 3022-770-692L / R . . \$329.95 ea



64-70 . . Mustang / Cougar Rear Frame Rail Patch,
Left / Right 3020-770-64L / R . . \$26.95 ea

Rear Crossmembers and Braces

Steel braces that are below the trunk floor at the rear next to the tail panel. Commonly rusted and should be replaced.



64-70 . . Mustang Rear Crossmember 3020-790-64 \$17.95 ea



64-70 . . Mustang Convertible Rear Brace 3020-780-64 \$24.95 ea

64-70 . . Mustang Convertible Rear Brace End Cap,
Left / Right 3020-780-641L / R . . \$19.95 ea

REAR BODY PANELS

Tail Lamp Parts

New reproduction parts designed to replace worn, broken, pitted, or missing originals.



- 64-66 . . Mustang Tail Lamp
- Bezel (use 2) 3020-840-64 \$14.95 ea
 - Bezel / Lens Hardware Kit (8 pieces) 3020-840-64S \$6.95 kit
 - Bezel to Body Seal (pair) 3020-843-64P \$3.95 pr
 - '64 Housing (use 2) (generator) 3020-844-641 \$34.95 ea
 - '65-66 Housing (use 2) (alternator) 3020-844-64 \$24.95 ea
 - Assembly Mount Hardware (8 pcs) 3020-844-641S \$12.95 kit
 - Housing Spacer Kit 3020-844-642S \$6.95 kit
 - Lens (without logo) (use 2) 3020-845-64 \$5.95 ea
 - Lens and Gasket (use 2) (no logo) 3020-845-64S \$8.95 ea
 - Lens (with logo) (use 2) 3020-845-641 \$9.95 ea
 - Lens Gaskets (pair) 3020-845-641P \$3.95 pr



- 67-68 Mustang (except Shelby or GT/CS Tail Lamp
- '67 Bezel and Seal (use 6) 3021-840-67 \$12.95 ea
 - '68 Bezel and Seal (use 6) 3021-840-68 \$12.95 ea
 - Housing to Body Seal (use 2) 3021-843-67 \$19.95 ea
 - Housing (use 2) 3021-844-67 \$44.95 ea
 - Mounting Hardware Kit (17 pieces) 3021-844-671S \$12.95 kit
 - Mounting Panel, Left / Right 3021-844-67L / R \$59.95 ea
 - Lens (use 2) (without logo) 3021-845-67 \$29.95 ea
 - Lens Screw Kit (8 pieces) 3021-845-671S \$12.95 kit
 - Lens Gaskets (pair) 3021-845-672P \$5.95 pr



- 67 Shelby Mustang, '67-68 Cougar Tail Lamp
- Bezels (pair) (except Cougar) 3021-840-672P \$169.95 pr
 - Housings (pair) 3021-844-672P \$184.95 pr
 - Lens (use 2) 3021-845-674 \$89.95 ea
 - Lens Gaskets (pair) 3021-845-673P \$9.95 pr



- 68-70 Shelby Mustang or '68 GT/CS Tail Lamp
- Bezel (use 2) 3021-840-682 \$99.95 ea
 - Housings (pair) 3021-844-681P \$159.95 pr
 - Lens (use 2) 3021-845-681 \$49.95 ea
 - Lens Gaskets (pair) 3021-845-682P \$9.95 pr

1 Cougar



Tail Lamp Parts (continued)



- 69 Mustang (except Shelby) Tail Lamp
 Molding (use 2) 3022-840-691 \$49.95 ea
 Inner Bezels (use 2) (3-piece set) 3022-840-692S \$19.95 set
 Mount Pad (pair) (thin) 3022-843-691P \$6.95 pr
 Lamp to Body Seal (thick) (use 2) 3022-843-692 \$34.95 ea
 Housing (use 2) 3022-844-691 \$79.95 ea
 Fastback Mounting Panel, LH / RH 3022-844-69L / R \$49.95 ea
 Assembly Hardware Kit (16 pieces) 3022-844-691S \$24.95 kit
 Lens (includes inner bezels) (use 2)
 (no logo) 3022-845-69S \$89.95 ea
 Lens Screw Kit (12 pieces) 3022-845-691S \$6.95 kit
 Lens Gaskets (pair) 3022-845-693P \$7.95 pr
 69-70 . . Mustang (exc. Shelby) Lens Screw Kit (4 pieces)
 3022-845-692S \$6.95 kit



- 70 Mustang (exc. Shelby) Tail Lamp
 Bezel (chrome), Left / Right 3022-840-701L / R \$99.95 ea
 Bezel (w/o chrome) (Boss) (LH/RH) 3022-840-702L / R \$124.95 ea
 Mount Pad (use 2) 3022-843-70 \$29.95 ea
 Housing (use 2) 3022-844-701 \$79.95 ea
 Assembly Hardware Kit (10 pieces) 3022-844-701S \$17.95 kit
 Lens (no logo) (use 2) 3022-845-70 \$34.95 ea



- 71-72 . . Mustang Tail Lamp
 Tail Lamp Assembly (use 2) 3023-842-71 \$219.95 ea
 Tail Lamp to Body Seal (use 2) 3023-843-71 \$19.95 ea
 Housing (use 2) 3023-844-71 \$44.95 ea
 Assembly Hardware Kit (18 pieces) 3023-844-711S \$27.95 kit
 Lens (w/ molding) (use 2) (no logo) 3023-845-71 \$189.95 ea

Back-Up Lamp Assemblies

Available in complete sets with body and socket, base to body seals, bulb, lens, screws, and lens gasket. Individual parts also available.



- 64-66 . . Mustang Back-Up Lamp
 Back-Up Lamp Assembly, LH / RH 3020-846-64LS / RS \$29.95 ea
 Body and Socket only, Left / Right 3020-846-64L / R \$19.95 ea
 Housing to Body Gasket only, L / R 3020-846-641L / R \$3.95 ea
 64-68 . . Mustang, '67-68 Cougar Back-Up Lamp
 Mount Hardware Kit (8 pieces) 3020-846-641S \$12.95 kit
 Lens only (use 2) (no logo) 3020-847-641 \$3.95 ea
 Lens only (use 2) (with logo) 3020-847-642 \$5.95 ea
 Lens Screw Kit (4 pieces) 3020-847-641S \$6.95 kit
 64-70 . . Mustang, 67-68 Cougar Lens Gaskets only
 (pair) 3020-847-642P \$3.95 pr
 67-68 . . Mustang / Cougar Back-Up Lamp
 Back-Up Lamp Assembly, LH / RH 3021-846-67LS / RS \$39.95 ea
 Body and Socket only, Left / Right 3021-846-671L / R \$29.95 ea
 Lamp to Body Gasket only (use 2) 3021-846-672 \$5.95 ea



- 69-70 . . Mustang Back-Up Lamp
 Back-Up Lamp Assembly, L / R 3022-846-69LS / RS \$39.95 ea
 Mount Hardware Kit (8 pieces) 3022-846-691S \$12.95 kit
 Lens and Gasket (use 2) 3022-847-69S \$5.95 ea
 Lens Screw Kit (4 pieces) 3022-847-691S \$6.95 kit

Tail Panels

EDP coated steel panels that finish the rear end of the car. The tail lamps and gas filler tubes install in this panel.



- 64-66 . . Mustang Tail Panel 3020-850-64 \$69.95 ea
 Heavy Gauge - **Best Quality!** 3020-850-641 \$79.95 ea
 67-68 . . Mustang Tail Panel 3021-850-67 \$69.95 ea
 Heavy Gauge - **Best Quality!** 3021-850-671 \$99.95 ea



- 69 Mustang Tail Panel 3022-850-69 \$129.95 ea
 Heavy Gauge - **Best Quality!** 3022-850-691 \$149.95 ea
 70 Mustang Tail Panel 3022-850-70 \$129.95 ea



- 71-73 . . Mustang Tail Panel 3023-850-71 \$129.95 ea
 Heavy Gauge - **Best Quality!** 3023-850-711 \$169.95 ea



Mustang

Tail Panel Emblems and Trim

Emblems and ornaments that install on the tail panel.



- 65-66 . . Shelby "GT-350" Emblem 3020-855-651 \$24.95 ea
- 70 Mustang Mach 1 Honeycomb Panel 3022-855-701 \$114.95 ea
- Molding Set for above 3022-855-702S \$179.95 set



- 70-73 . . Mustang Mach 1 Honeycomb Panel
- Attaching Clip Set (12 pieces) 3022-855-704S \$19.95 set
- Attaching Nut Set (12 pieces) 3022-855-703S \$24.95 set
- 71-73 . . Mustang Mach 1 Honeycomb Panel 3023-855-711 \$114.95 ea
- Molding Set for above 3023-855-712S \$149.95 set

Rear Valance Panels

Heavy-gauge EDP coated steel panels that finish bottom rear of the car. These are the best quality on the market. We also have standard quality panels that use a thinner gauge steel for those buyers who demand a less expensive price for driver quality.



- 64-66 . . Mustang (w/o exhaust holes)
- w/o back-up lamp holes 3020-875-641A \$59.95 ea
- driver quality 3020-875-641 \$39.95 ea
- w/ back-up lamp holes 3020-875-642A \$59.95 ea
- driver quality 3020-875-642 \$39.95 ea



- 65-66 . . Mustang GT (w/ exhaust holes)
- w/o back-up lamp holes 3020-875-651A \$59.95 ea
- driver quality 3020-875-651 \$39.95 ea
- w/ back-up lamp holes 3020-875-652A \$59.95 ea
- driver quality 3020-875-652 \$39.95 ea



- 67-68 . . Mustang
- w/o exhaust holes 3021-875-671A \$49.95 ea
- driver quality 3021-875-671 \$39.95 ea
- w/ exhaust holes 3021-875-672A \$49.95 ea
- driver quality 3021-875-672 \$39.95 ea



- 69-70 . . Mustang
- w/o exhaust holes 3022-875-691 \$59.95 ea
- w/ exhaust holes 3022-875-692 \$59.95 ea



- 71-73 . . Mustang
- w/o exhaust holes 3023-875-711 \$59.95 ea
- w/ exhaust holes 3023-875-712 \$59.95 ea

Exhaust Tips and Moldings

Stamped steel tip and anodized aluminum molding for the exhaust tips on GT models.



- 65-66 . . Mustang GT Exhaust Tips (pair) 3020-881-65P \$49.95 pr
- Tip Bezel (on rear valance) (use 2) 3020-880-65 \$14.95 ea
- 67-69 . . Mustang GT or Mach 1 Exhaust Tips (pair)
- 3021-881-67P \$89.95 pr
- 70 Mustang Mach 1 Exhaust Tips (pair) 3022-881-70P \$129.95 pr
- 71-73 . . Mustang Mach 1 Exhaust Tip (use 2) 3023-881-71 \$44.95 ea

SIDE MARKERS AND BODY HARDWARE

Side Marker Lamps

New injection molded lenses and die-cast or aluminum bezels replace broken or missing originals.



- 68 Mustang Side Markers
- Front Marker Assemblies (pair) 3021-140-68P \$159.95 pr
- Front Marker Gaskets (pair) 3021-141-68P \$3.95 pr
- Front Hardware Kit (4 pieces) 3021-140-683S \$6.95 kit
- Rear Marker (up to 2/15/68)
- Lens (use 2) 3021-625-681 \$29.95 ea
- Bezel (use 2) 3021-626-681 \$29.95 ea
- Rear Marker Assembly (use 2) (from 2/15/68)
- 3021-625-682 \$69.95 ea
- Rear Hardware Kit (6 pieces) 3021-626-682S \$6.95 kit



- 69 Mustang / Cougar, '69-70 Shelby GT Side Markers
- Front Marker (use 2) 3022-140-69 \$19.95 ea
- Marker Bezel (use 4) 3022-141-69 \$19.95 ea
- Front Bezel Hardware Kit (4 pieces) 3022-141-691S \$6.95 kit
- Marker Gasket Set (4 pieces) 3022-142-69S \$4.95 set
- Rear Marker (use 2) 3022-625-69 \$19.95 ea
- Rear Bezel Hardware Kit (4 pieces) 3022-626-691S \$6.95 kit



- 70 Mustang (except Shelby) Side Markers
- Front Marker, Left / Right 3022-140-70L / R \$24.95 ea
- Front Bezel, Left / Right 3022-141-70L / R \$34.95 ea
- Front Bezel Hardware Kit (4 pieces) 3022-141-701S \$5.95 kit
- Rear Marker (use 2) 3022-625-70 \$29.95 ea
- Rear Bezel, Left / Right 3022-626-70L / R \$39.95 ea
- Rear Lens Gaskets (pair) 3022-627-701P \$4.95 pr
- Rear Bezel Gaskets (pair) 3022-627-702P \$4.95 pr
- Rear Bezel Hardware Kit (12 pieces) 3022-626-701S \$6.95 kit

/ Cougar



Side Marker Lamps (continued)



- 71-73 . . . Mustang Side Markers
- Front Marker, Left / Right 3023-140-71L / R . . . \$34.95 ea
 - Front Bezel, Left / Right 3023-141-71L / R . . . \$29.95 ea
 - Rear Marker, Left / Right 3023-625-71L / R . . . \$34.95 ea
 - Rear Bezel, Left / Right 3023-626-71L / R . . . \$29.95 ea
 - Rear Hardware Kit (4 pieces) 3022-626-691S \$6.95 kit
 - Rear Bezel Gaskets, LH / RH pair 3023-627-71P \$6.95 pr



Master Body Hardware Kits

Typical kit includes fasteners to attach battery tray, bumper guards and brackets, cowl braces, cowl panel, door hinges, door strikers, door latches, fenders, fender splash shields, fender extensions, floorboard plates, grille, grille supports, headlamp doors, headlamp housings, hood, hood hinges, hood latch, hood latch catch, hood latch support, outside mirrors, quarter extensions, shock tower braces, stone deflector, trunk latch, trunk latch striker, trunk lid, trunk lid hinges, front valance, and rear valance. Kits include all related spring nuts and clips.

- 64-65 . . . Mustang (except Shelby) (369 pieces) .3020-958-64S . . . \$239.95 kit
- 65 Shelby Mustang (370 pieces) 3020-958-65S . . . \$239.95 kit
- 66 Mustang (except Shelby) (366 pieces) .3020-950-661S . . . \$239.95 kit
- 66 Shelby Mustang (364 pieces) 3020-958-662S . . . \$239.95 kit
- 67 Mustang (except Shelby) (362 pieces) .3021-950-671S . . . \$239.95 kit
- 67 Shelby Mustang (449 pieces) 3021-958-672S . . . \$259.95 kit
- 68 Mustang (except Shelby) (350 pieces) .3021-950-681S . . . \$239.95 kit
- 68 Shelby Mustang (375 pieces) 3021-958-682S . . . \$259.95 kit
- 69 Mustang (except Shelby) (333 pieces) .3022-950-691S . . . \$219.95 kit
- 69-70 . . Shelby Mustang (416 pieces) 3022-958-692S . . . \$239.95 kit
- 70 Mustang (except Shelby) (319 pieces) .3022-958-70S . . . \$219.95 kit
- 71 Mustang (349 pieces) 3023-958-71S . . . \$219.95 kit
- 72 Mustang (342 pieces) 3023-958-72S . . . \$219.95 kit
- 73 Mustang (332 pieces) 3023-958-73S . . . \$219.95 kit
- 67 Cougar (387 pieces) 3321-958-67S . . . \$239.95 kit
- 68 Cougar (381 pieces) 3321-958-68S . . . \$239.95 kit
- 69 Cougar (335 pieces) 3322-958-69S . . . \$219.95 kit
- 70 Cougar (336 pieces) 3322-958-70S . . . \$219.95 kit

Wheel Lug Nuts

New aftermarket lug nuts made in USA.



- 64-73 . . Mustang / Cougar (1/2-20), box of 50 . .4000-586-2S \$14.95 box

INTERIOR PARTS

Kick Panels (Interior)

New reproduction textured plastic kick panels molded in correct colors for most models. Sold in pairs for one car. All 64-68 Kick Panels are priced at \$34.95 pr.



- 64-66 . . Mustang Kick Panels, Left / Right Pair
- Coupe / Fastback Convertible
 - Black 3020-408-641PC . . . 3020-408-641PV
 - '64-65 Medium Blue 3020-408-642PC . . . 3020-408-642PV
 - '64-65 Red 3020-408-643PC . . . 3020-408-643PV
 - '64-65 White 3020-408-644PC . . . 3020-408-644PV
 - '64-65 Ivy Gold 3020-408-645PC . . . 3020-408-645PV
 - '64-65 Palimino 3020-408-646PC . . . 3020-408-646PV
 - '66 Dark Red 3020-408-661PC . . . 3020-408-661PV
 - '66 Aqua 3020-408-662PC . . . 3020-408-662PV
 - '66 Parchment 3020-408-663PC . . . 3020-408-663PV
 - '66 Light Blue 3020-408-664PC . . . 3020-408-664PV

- 64-66 . . Mustang Kick Panel Moldings (use with Deluxe "Pony" Interior)
- Left / Right Pair 3020-408-65P \$22.95 pr



- 67-68 . . Mustang / Cougar Kick Panels, Left / Right Pair
- Coupe / Fastback Convertible
 - Black 3021-408-671PC . . . 3021-408-671PV
 - '67 Red 3021-408-672PC . . . 3021-408-672PV
 - Light Blue 3021-408-673PC . . . 3021-408-673PV
 - Parchment 3021-408-674PC . . . 3021-408-674PV
 - Saddle 3021-408-675PC . . . 3021-408-675PV
 - Turquoise 3021-408-676PC . . . 3021-408-676PV
 - Ivy Gold 3021-408-677PC . . . 3021-408-677PV
 - '68 Maroon 3021-408-681PC . . . 3021-408-681PV
 - '68 Nugget Gold 3021-408-682PC . . . 3021-408-682PV



- 69-70 . . Mustang Kick Panels, Left / Right Pair
- Black 3022-408-691P \$74.95 pr



Mustang

Door Trim Parts

Die-cast speaker grilles for models with factory speakers in the doors and stainless steel moldings used on models with Custom Interior.



- 65-66 . . Mustang Door Panel Moldings (4-piece set)3020-453-651S . . . \$109.95 set
- 65-66 . . Mustang Door Cup Kit (includes brackets, cups, black pads, and mounting hardware for both doors) .3020-453-652S . . . \$34.95 kit
- 66 . . . Mustang Speaker Grilles (pair)3020-453-661P . . . \$49.95 pr



- 67 . . . Mustang Door Panel Moldings (pair) . . .3021-453-672P . . . \$129.95 pr
- 67 . . . Mustang Door Panel Inserts (pair) . . .3021-453-673P . . . \$139.95 pr
- 67-68 . . Mustang Speaker Grilles (pair)3021-453-671P . . . \$139.95 pr
- 67-68 . . Mustang / Cougar Door Pull Brace Kit .3021-453-681S . . . \$19.95 kit
- 67-68 . . Mustang / Cougar Door Pull End Cap Kit3321-453-681S . . . \$49.95 kit



- 69-70 . . Mustang Upper Garnish Rail, Left / Right3022-453-691L / R . . \$79.95 ea
 (with grained pattern) (std interior)
- 69-70 . . Mustang Speaker Grilles (pair)3022-453-692P . . . \$49.95 pr
- 69 . . . Mustang Custom Interior Teakwood Panels, Pair3022-453-693P . . . \$99.95 pr
- 69-70 . . Mustang Deluxe Interior Walnut Panels, Pair3022-453-694P . . . \$99.95 pr



- 69-70 . . Mustang Deluxe Interior Door Panel Emblems, Pair3022-453-695P . . . \$24.95 pr
- 71-73 . . Mustang / Cougar Speaker Grille (use 2)3023-453-711 . . . \$29.95 ea

Instrument Panel Bezels

Injection molded chromed and painted plastic bezels for popular models. These are the bezels that surround the instrument cluster. Be sure to order new lenses with your bezels for like-new appearance!



- 64-65 . . Mustang (std) (w/o gauges)3020-523-641 . . . \$24.95 ea
- Lens (with generator)3020-523-642 . . . \$19.95 ea
- Lens (with alternator)3020-523-651 . . . \$17.95 ea
- Lens Anti-Rattle Kit3020-523-642AS . . . \$5.95 kit



- 64-66 . . Mustang Radio Repair Patch3020-521-64 . . . \$12.95 ea
- Radio Knob Set3020-523-6421S . . . \$19.95 set
- Dash Ashtray Assembly3020-523-6422 . . . \$44.95 ea

Instrument Panel Bezels (continued)



- 65-66 . . Mustang Instrument Bezels
- GT (black camera case)3020-523-652 . . . \$39.95 ea
- Deluxe Interior (woodgrain)3020-523-653 . . . \$39.95 ea
- '66 standard (black camera case) . .3020-523-661 . . . \$29.95 ea
- Lens for above bezels3020-523-654 . . . \$9.95 ea
- Lens Anti-Rattle Kit3020-523-661S . . . \$6.95 kit



- 67-68 . . Mustang Instrument Bezels
- '67 Std. Black Camera Case3021-523-671 . . . \$59.95 ea
- '67 Deluxe Brushed Aluminum3021-523-672 . . . \$149.95 ea
- '68 Std. Black Camera Case3021-523-681 . . . \$69.95 ea
- '68 Deluxe Woodgrain3021-523-682 . . . \$149.95 ea
- Lens Set (5-pieces) (w/o tach)3021-523-676S . . . \$34.95 set
- Lens Set (5-pieces) (w/ tach)3021-523-676AS . . \$39.95 set
- Lens Bracket Set (5-pieces)3021-523-677S . . . \$29.95 set
- Radio Bezel (w/o console)3021-523-6715 . . . \$59.95 ea
- '67 Dash Ashtray3021-523-6718 . . . \$29.95 ea



- Dash Trim Panels (3-pieces) (w/o A/C) (RH side, top, and above radio) ('67-68 std. black)3021-523-673S . . . \$59.95 set
- ('67 Deluxe bright aluminum)3021-523-674S . . . \$49.95 set
- ('68 Deluxe woodgrain)3021-523-683S . . . \$59.95 set
- ('68 Deluxe vinyl wood only)3021-523-683AS . . \$29.95 set



- Deluxe Dash Trim Inserts (4-pieces) (w/o A/C) (RH side, top, above radio, and heater control panel) ('67 bright aluminum)3021-523-674BS . . \$109.95 set
- ('68 woodgrain)3021-523-683BS . . \$109.95 set



- Std. Interior Dash Emblem (horse) . .3021-523-6716 . . . \$6.95 ea
- Deluxe Interior Dash Emblem & Base3021-523-6717S . . . \$34.95 ea
- '67 Shelby GT-350 Dash Emblem . . .3021-058-672 . . . \$69.95 ea
- '67 Shelby GT-500 Dash Emblem . . .3021-058-673 . . . \$69.95 ea
- '68 Shelby GT-350 Dash Emblem . . .3021-523-685 . . . \$54.95 ea
- '68 Shelby GT-500 Dash Emblem . . .3021-523-686 . . . \$54.95 ea
- '68 Shelby GT-500KR Dash Emblem . .3021-523-687 . . . \$34.95 ea

1 Cougar



Instrument Panel Bezels (continued)



- 69-70 .. Mustang Dash Bezels
- '69 Dash Bezel (black) 3022-523-691 \$129.95 ea
 - '70 Dash Bezel (black) 3022-523-701 \$129.95 ea
 - Lens Set (3-piece) (w/o tach) 3022-523-692S \$39.95 set
 - Lens Set (3-piece) (w/ tach) 3022-523-692AS \$59.95 set
 - '69 Steering Column Cover 3022-523-6915 \$44.95 ea
 - '70 Steering Column Cover 3022-523-703 \$44.95 ea
 - Dash End Moldings (black) (pair) 3022-523-6918P \$24.95 pr



- Std. Dash Emblem "Mustang" 3022-523-693 \$59.95 ea
- "Mach 1" Dash Emblem 3022-523-694 \$22.95 ea
- Shelby GT-350 Dash Emblem 3022-523-695 \$8.95 ea
- Shelby GT-500 Dash Emblem 3022-523-696 7.95 ea



- Radio Bezel (black finish) 3022-523-699 \$32.95 ea
- Radio Bezel (woodgrain finish) 3022-523-699A \$49.95 ea
- Radio Knob Set 3022-523-6910S \$49.95 set
- Dash Radio Moldings, Pair 3022-523-6916P \$24.95 pr



- 71-73 .. Mustang Dash Bezels
- Instrument Bezel 3023-523-711 \$89.95 ea
 - Radio Bezel 3023-523-715 \$74.95 ea
 - '71-72 Dash Bezel, Right (w/o hole) 3023-523-712R \$99.95 ea
 - '72-73 Dash Bezel, Right (w/ hole) 3023-523-721R \$99.95 ea
 - '72-73 Seat Belt Light Bezel 3023-523-722 \$6.95 ea
 - Astro Vent Deflector, Left / Right 3023-523-713L / R \$24.95 ea

Wiper Switches and Bezels

New switches and bezels to replace worn, missing, or broken originals.



- 64-66 .. Mustang Wiper Switch Bezel 3020-523-643 \$9.95 ea
- Wiper Switch Spacer 3020-523-644 \$7.95 ea
 - Wiper Switch Knob 3020-523-645 \$7.95 ea
 - Wiper Switch Nut 3020-523-646A \$14.95 ea
 - Wiper Switch, 1-speed no washers 3020-523-646B \$44.95 ea



- 69-70 .. Mustang / Cougar Wiper Switch Bezel 3022-523-697 \$19.95 ea
- Wiper Switch Knob 3022-523-698 \$19.95 ea

Ignition Switches and Bezels

New switches and bezels to replace worn, missing, or broken originals.



- 64-66 .. Mustang Ignition Switch 3020-523-647 \$14.95 ea
- Ignition Switch Spacer 3020-523-648 \$7.95 ea
 - Ignition Switch Bezel 3020-523-6411 \$9.95 ea



- 67-69 .. Mustang / Cougar
- '67 Ignition Switch 3021-523-679 \$19.95 ea
 - '67-68 Ignition Switch Bezel 3021-523-679A \$11.95 ea
 - '67-68 Ignition Bezel Retainer 3021-523-679B \$9.95 ea
 - '67-68 Ignition Switch Bracket 3021-523-679C \$24.95 ea
 - '68-69 Ignition Switch 3021-523-684 \$14.95 ea
 - '69 Ignition Switch Bezel 3022-523-6911 \$24.95 ea

Headlight Switches and Bezels

New switches and bezels to replace worn, missing, or broken originals.



- 64-66 .. Mustang Headlamps
- Switch Bezel 3020-523-6412 \$9.95 ea
 - '64 Switch Rod & Knob 3020-523-6413 \$10.95 ea
 - '65-66 Switch Rod & Knob 3020-523-656 \$9.95 ea
 - '64-65 Switch (8/17/64 to 11/16/64) 3020-523-6414 \$54.95 ea
 - '65-66 Switch (from 11/16/64) 3020-523-655 \$19.95 ea
 - Switch Retainer 3020-523-6415 \$14.95 ea



- 67-68 .. Mustang Headlamps
- Switch Bezel 3021-523-6710 9.95 ea
 - Switch Rod and Knob 3021-523-6711 \$12.95 ea
 - Switch 3020-523-655 \$19.95 ea
 - Switch Retainer 3021-523-6712 \$14.95 ea



- 69-70 .. Mustang / Cougar Headlamps
- Switch Bezel 3022-523-6912 \$19.95 ea
 - Switch Rod and Knob 3022-523-6914 \$24.95 ea
 - '69 Mustang Switch 3022-523-6913 \$49.95 ea
 - '70 Mustang Switch 3022-523-702 \$34.95 ea



- 71-72 .. Mustang Headlamps
- Switch 3023-523-716 \$19.95 ea



Mustang

Heater and A/C Controls

New die-cast control panels and control knob sets for most models.



- 64-66 . . Mustang Heater Control Panel.3020-523-6417 \$19.95 ea
- Control Knob Set.3020-523-6417S \$19.95 set
- 67 Mustang Heater Control Knob Set. . . .3021-523-6722S \$24.95 set
- Same for models with A/C.3021-523-6722AS \$24.95 set
- 68 Mustang Heater Control Knob Set. . . .3021-523-688S \$24.95 set
- Same for models with A/C.3021-523-688AS \$24.95 set



- 69-70 . . Mustang, 69-73 Cougar Heater Control Knob Set
-3022-523-6917S \$19.95 set

Park Brake Handles

New plastic handles that control the park brake mechanism.



- 64-66 . . Mustang Park Brake Handle3020-523-6416 \$5.95 ea
- 67-68 . . Mustang / Cougar Park Brake Handle3021-523-678 \$5.95 ea

Convertible Top Switches and Bezels

New die-cast bezels and electrical switches that operate the power top on convertible models.



- 64-66 . . Mustang Top Switch Bezel and Knob3020-523-6420 \$49.95 ea
- Top Switch.3020-523-6420A \$49.95 ea
- 67 Mustang Top Switch and Bezel3021-523-6714S \$64.95 ea

Cigarette Lighters and Hardware

Brand new die-cast bezels, knobs, and elements to replace your broken or missing cigarette lighter.



- 64-66 . . Mustang Lighter Knob, Bezel, and Element Assembly
-3020-523-6418S \$10.95 ea
- 64-70 . . Mustang / Cougar Lighter Socket and Retainer
-3020-523-6419S \$6.95 set
- 67-70 . . Mustang / Cougar Lighter Knob, Bezel, and Element Assembly
-3021-523-6719S \$14.95 ea

Clock and Trip Odometer Knobs

Brand new knob assemblies to replace missing knobs for optional clock and trip odometers.



- 67-68 . . Mustang / Cougar
- Clock Reset Knob Assembly.3021-523-6713S \$14.95 ea
- Trip Odometer Reset Knob3021-523-6713AS \$19.95 ea

Glovebox Doors and Hardware

Brand new glovebox doors, latches, and emblems for complete restoration.



- 64-65 . . Mustang (except GT or Deluxe Interior)
- Glovebox Door3020-524-641 \$99.95 ea
- Latch Assembly.3020-524-642 \$18.95 ea
- Emblem (curved).3020-524-643 \$9.95 ea



- 65-66 . . Mustang (except '65 std)
- '65-66 GT Glovebox Door.3020-524-651 \$99.95 ea
- '65-66 Deluxe Glovebox Door. . . .3020-524-652 \$99.95 ea
- '66 std Glovebox Door3020-524-661 \$99.95 ea
- Latch Assembly.3020-524-653 \$18.95 ea
- Emblem (flat).3020-524-654 \$9.95 ea



- 67-68 . . Mustang
- Latch Assembly.3021-524-672 \$19.95 ea
- Glovebox Door Hinge3021-524-673 \$24.95 ea
- Glovebox Button Bezel3021-524-674 \$7.95 ea
- Glovebox Liner3021-524-675 \$24.95 ea



- 69-70 . . Mustang
- '69 Latch Assembly.3022-524-691 \$19.95 ea
- '70 Latch Assembly.3022-524-701 \$19.95 ea
- Glovebox Liner (without A/C)3022-524-693 \$24.95 ea
- Glovebox Liner (with A/C).3022-524-693A \$24.95 ea

Gauges and Instruments

New reproduction gauges bring back new life to your worn and faded interior, not to mention bringing back accurate readings from non-functioning original gauges!



- 64-65 . . Mustang (without gauges)
- Speedometer3020-529-641 \$79.95 ea
- Fuel Gauge3020-529-642 \$59.95 ea
- Temp Gauge3020-529-643 \$59.95 ea

1 Cougar



Gauges and Instruments (continued)



- 65-66 . . Mustang (with gauges)
- Fuel Gauge 3020-529-652 \$59.95 ea
 - Temp Gauge 3020-529-653 \$59.95 ea
 - Speedometer 3020-529-651 \$79.95 ea
 - Oil Pressure Gauge 3020-529-654 \$59.95 ea
 - '66 Amp Gauge 3020-529-661 \$59.95 ea

New Rally Pac Gauge Clusters include all the mounting hardware, brackets, and wiring needed to install.



- 66 Mustang L6 (6000 rpm) 3020-529-662S \$424.95 set
- Mustang V8 (6000 rpm) 3020-529-663S \$414.95 set
- Mustang V8 (8000 rpm) 3020-529-664S \$424.95 set



- 67 Shelby GT, '67-68 Mustang (without center console)
- Underdash Gauge Pod 3021-529-678S \$699.95 set



- 69 Mustang Gauges
- Speedometer 3022-529-691 \$149.95 ea
 - Fuel / Temp Gauge 3022-529-692A \$149.95 ea
 - Fuel Gauge 3022-529-693 \$69.95 ea
 - Temperature Gauge 3022-529-695 \$69.95 ea
 - Alternator Gauge 3022-529-692 \$69.95 ea
 - Oil Pressure Gauge 3022-529-694 \$69.95 ea



- 70 Mustang Gauges
- Speedometer 3022-529-701 \$149.95 ea
 - Fuel / Temp Gauge 3022-529-702A \$149.95 ea
 - Fuel Gauge 3022-529-703 \$69.95 ea
 - Temperature Gauge 3022-529-705 \$69.95 ea
 - Alternator Gauge 3022-529-702 \$69.95 ea
 - Oil Pressure Gauge 3022-529-704 \$69.95 ea

- 64-66 . . Mustang Speedometer Cable and Housing
- L6 4-speed or all A/T 3020-985-642S \$12.95 ea

Courtesy Lamps

New reproduction dome lamp, interior courtesy lamps, and door courtesy lamps for most models.



- 65-66 . . Mustang Door Lamps (Deluxe Interior)
- Lamp Assembly (use 2) 3020-531-651S \$34.95 ea
 - Lamp to Door Gaskets (pair) 3020-531-651P \$5.95 pr
- 67-68 . . Mustang Door Lamps (Deluxe Interior)
- Lamp Assembly, Left / Right 3021-531-673LS / RS \$59.95 ea
 - Lamp to Door Gaskets (pair) 3021-531-674P \$5.95 pr
- 69-70 . . Mustang / Cougar Door Lamps (Deluxe Interior)
- Left / Right pair 3022-531-692P \$79.95 pr



- 65-70 . . Mustang Fastback, 69-73 Cougar Sail Panel Lamps
- '65-68 Lamp Assembly (use 2) 3020-531-652S \$39.95 ea
 - Lenses only (pair) 3020-531-653P \$8.95 pr
 - '69-70 Mustang Lamp Assembly (use 2) 3022-531-691S \$39.95 ea
- (photo not available)

- 67-70 . . Mustang / Cougar Hardtop Dome Lamp
- Lens 3021-531-671 \$5.95 ea
 - Housing 3021-531-672 \$12.95 ea

Coat Hooks

New reproduction chrome coat hooks with screws for popular models.



- 64-66 . . Mustang Coupe / Fastback (pair) 3020-532-641P \$9.95 pr
- 64-66 . . Mustang Convertible, '67 Mustang / Cougar (all) (pair) 3020-532-642P \$9.95 pr
- 68-73 . . Mustang / Cougar (use 2) (black) 3021-532-681 \$7.95 ea

Steering Wheels and Parts

New reproduction steering wheels with accessories to install. Excellent reproductions.



- 64 Mustang Black Standard Wheel (bare) 3020-540-641 \$179.95 ea
- Horn Cap Assembly 3020-542-641S \$99.95 ea



- 65 Mustang Black Standard Wheel (bare) 3020-540-651 \$179.95 ea
- Horn Cap Assembly 3020-542-651S \$99.95 ea



Mustang

Steering Wheels and Parts (continued)



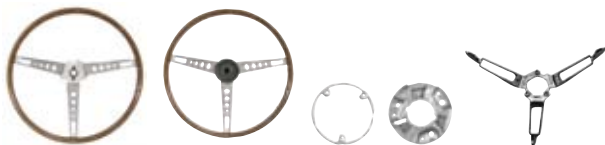
- 65-66 . . Mustang Woodgrain Wheel (bare)3020-540-652 \$229.95 ea
- Assembly (with no logo cap)3020-540-652S \$349.95 ea
- Assembly (less horn cap)3020-540-653S \$329.95 ea
- Horn Ring3020-541-652 \$39.95 ea
- Horn Ring Base3020-542-654 \$22.95 ea



- Horn Cap (no emblem)3020-542-652 \$44.95 ea
- Horn Cap Emblem3020-542-652A \$14.95 ea
- Horn Cap Assembly (no logo)3020-542-652S \$49.95 ea
- Horn Cap Assembly (with logo)3020-542-652AS \$89.95 ea
- '66 Shelby Horn Cap Assembly3020-542-661S \$114.95 ea
- Horn Button Plate3020-542-653 \$7.95 ea
- Horn Blowing Plate3020-542-655 \$9.95 ea
- Ring to Wheel Retainers3020-542-656S \$9.95 ea



- 67 Mustang Black Standard Wheel (bare) .3021-540-671 \$234.95 ea
- Horn Ring3021-541-671 \$39.95 ea
- Horn Pad Assembly (black)3021-542-671AS \$79.95 ea



- 67 Mustang Woodgrain Wheel (bare)3021-540-672 \$299.95 ea
- Assembly (with no logo cap)3021-540-672S \$349.95 ea
- Wood Wheel Base3021-540-673 \$14.95 ea
- Horn Ring Base3021-542-673 \$29.95 ea
- Horn Ring3020-541-652 \$39.95 ea



- Horn Pad Assembly (black)3021-542-671AS \$79.95 ea
- Horn Ring Retainer Plate3021-542-672 \$9.95 ea
- Horn Blowing Plate3021-542-674 \$9.95 ea

Steering Wheels and Parts (continued)



- 68-69 . . Mustang 2-spoke Steering Wheel
- Black (bare wheel only)3021-540-681 \$199.95 ea
- Horn Ring3021-541-681 \$59.95 ea
- Horn Ring Contact Kit3021-541-682S \$22.95 kit
- Horn Panel Bezel3021-542-681 \$32.95 ea
- Horn Panel Pad (Black)3021-542-682 \$29.95 ea
- Horn Panel Pad Buttons (set of 6)3021-542-683S \$29.95 set
- '68 Horn Panel Emblem3021-542-684 \$32.95 ea

Turn Signal Levers

Chromed directional stalk on steering column with knob included.



- 64-66 . . Mustang3020-543-64 \$7.95 ea
- 67-73 . . Mustang / Cougar3021-543-67 \$8.95 ea

Console Parts

Chromed and painted die-cast parts to correctly restore a center console.



- 64-66 . . Mustang Console Parts
- Front Door3020-551-647 \$79.95 ea
- M/T Shift Plate (without A/C)3020-551-648 \$59.95 ea
- A/T Shift Plate (without A/C)3020-551-649 \$59.95 ea
- Top Finish Plate (without A/C)3020-551-6410 \$129.95 ea
- Ashtray3020-551-6411 \$29.95 ea
- 67 Mustang Console Ashtray Assembly3021-551-671S \$109.95 ea

Shifter Parts

Chromed and painted die-cast parts to replace the automatic shifter dial trim on models without center console.



- 64 Mustang Shift Dial Assembly3020-552-641AS \$39.95 ea
- 65-66 . . Mustang Shift Dial Assembly3020-552-641S \$29.95 ea
- 67-68 . . Mustang / Cougar Shift Dial Assembly3021-552-671S \$29.95 ea
- 69-70 . . Mustang / Cougar Shift Dial Assembly3022-552-691S \$29.95 ea
- 71-73 . . Mustang / Cougar Shift Dial Assembly3023-552-711S \$29.95 ea

1 Cougar



Fold Down Seat Hardware

This equipment is used on Mustang Fastback models with optional fold-down rear seat.



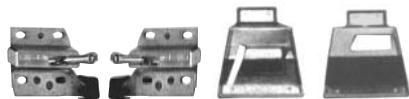
- 65-70 .. Mustang Fold Down Seat Catch Set
..... (3-pieces) 3020-583-651S \$29.95 set
- 65-70 .. Mustang Trap Door Latch Catch Plate 3020-583-658 \$16.95 ea
- 65-68 .. Mustang Trap Door Latch 3020-583-652 \$29.95 ea
- 69-70 .. Mustang Trap Door Latch 3022-583-691 \$39.95 ea



- 65-66 .. Mustang Trap Door Hinge Set 3020-583-653S \$29.95 set
- 67-70 .. Mustang Trap Door Hinge Set 3021-583-672S \$39.95 set
- 65-66 .. Mustang Trap Door Prop Assembly 3020-583-654S \$59.95 ea
- 67-68 .. Mustang Trap Door Prop Assembly 3021-583-673 \$29.95 ea
- 69-70 .. Mustang Trap Door Prop Assembly 3022-583-692 \$49.95 ea



- 65 Mustang Seat Latch, w/ knob & bumper 3020-583-655 \$69.95 ea
..... Latch Cover Plate 3020-583-656 \$34.95 ea
- 66 Mustang Seat Latch, w/ knob 3020-583-661 \$69.95 ea
..... Latch Cover Plate 3020-583-662 \$34.95 ea



- 67-70 .. Mustang Seat Latch, w/ knob & bumper,
..... Left / Right 3021-583-671L / R .. \$49.95 ea
- 67 Mustang Seat Latch Cover Set
..... w/o Fold Down Rear Seat 3021-583-674S \$44.95 set
..... w/ Fold Down Rear Seat 3021-583-675S \$44.95 set

Rear Quarter Trim

Chromed ashtray assembly for the rear quarter armrest on convertible models. Use 2 per car. Also plastic rear corner trim for rear quarter glass on fastback models.



- 65-66 .. Mustang Fastback Rear Quarter Trim,
..... Black, Plastic, Pair 3020-645-651P \$319.95 pr
..... Vent Slides, Pair, Chrome 3020-645-652P \$49.95 pr
..... Vent Slide Bezels, Pair, Chrome 3020-645-653P \$24.95 pr
- 64-68 .. Mustang Convertible Ashtray
..... Cover Assembly (use 2) 3020-647-64S \$24.95 ea
..... Receptacle (use 2) 3020-647-641 \$19.95 ea



- 69-70 .. Mustang Fastback Corner Moldings (pr) 3022-645-691P \$14.95 pr

Pedals, Pads, and Trim

New Pedal Assemblies, rubber pedal pads, and stainless trim for most models.



- 64-68 .. Mustang Gas Pedal Pad (w/ trim) 3020-911-64 \$9.95 ea
..... Gas Pedal Assembly (M/T) 3020-911-641S \$69.95 ea
..... Gas Pedal Assembly (A/T) 3020-911-642S \$69.95 ea
..... Gas Pedal Spring 3020-911-643 \$3.95 ea
..... Gas Pedal Screw 3020-911-644 \$3.95 ea



- 69-70 .. Mustang / Cougar Gas Pedal Pad 3022-911-69 \$19.95 ea
..... Gas Pedal Assembly 3022-911-691S \$79.95 ea



- 64-68 .. Mustang / Cougar Clutch Pedal with M/T
..... Clutch Pedal Pad 3020-912-641 \$4.95 ea
..... Stainless Trim for above 3020-912-642 \$6.95 ea
- 69-73 .. Mustang / Cougar Clutch Pedal with M/T
..... Clutch Pedal Pad 3022-912-691 \$8.95 ea
..... Stainless Trim for above 3022-912-692 \$17.95 ea



- 64-73 .. Mustang / Cougar M/T Brake Pedal Pad
..... w/o disc brakes 3020-912-643 \$5.95 ea
..... w/ disc brakes 3020-912-644 \$9.95 ea
..... Stainless trim for above 3020-912-645 \$7.95 ea



- 64-67 .. Mustang / Cougar A/T Brake Pedal Pad
..... w/o disc or power brakes 3020-913-641 \$7.95 ea
..... w/ power drum brakes 3020-913-641A \$12.95 ea
..... w/ disc brakes 3020-913-642 \$9.95 ea
..... Stainless trim for above 3020-913-643 \$6.95 ea



- 68-73 .. Mustang / Cougar A/T Brake Pedal Pad
..... w/o disc brakes 3021-913-681 \$6.95 ea
..... w/ disc brakes 3021-913-682 \$14.95 ea
..... Stainless trim for above 3021-913-683 \$11.95 ea



- 69-73 .. Mustang / Cougar Park Brake Pad 3022-914-691 \$6.95 ea
..... Stainless trim for above 3022-914-692 \$9.95 ea



- 65-73 .. Mustang / Cougar Brake Lamp Switch
..... 65-66 (w/ alt.), 67-70 w/o PB 3020-915-651 \$8.95 ea
..... 71-73 (w/o PB) 3023-915-712 \$4.95 ea
..... 71-73 (w/ PB) 3023-915-713 \$4.95 ea



Mustang

Pedals, Pads, and Trim (continued)



- 64-73 .. Mustang / Cougar Headlamp Dimmer
 Switch 3020-915-652 \$7.95 ea
 Rubber Cover 3020-915-653 \$6.95 ea



- 64-66 .. Mustang Brake / Clutch Pedal Support .3020-530-641 \$49.95 ea
 67-68 .. Mustang / Cougar Brake / Clutch Pedal Support
 3021-530-67 \$59.95 ea

Bucket Seat Parts

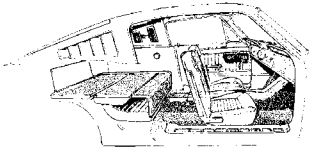
New parts to repair or replace broken or damaged seats.



- 64-73 .. Mustang / Cougar Seat Adjuster Knob .3020-922-641 \$6.95 ea
 64-68 .. Mustang / Cougar Bucket Seat Tracks
 (use 2 pair per car) 3020-922-642S \$69.95 pr
 69-70 .. Mustang / Cougar Bucket Seat Tracks
 (use 2 pair per car) 3022-922-691S \$59.95 pr



- 64-66 .. Mustang Seat Side Trim, Left / Right ... 3020-922-64L / R ... \$19.95 ea
 67-68 .. Mustang / Cougar Seat Side Trim, L/R .3021-922-671L / R ... \$24.95 ea



- 65-66 .. Mustang Folding Rear Seat Molding Set
 (14 pieces) 3020-922-651S \$249.95 set
 69-70 .. Mustang Folding Rear Seat Molding Set
 (chrome and stainless) 3022-922-693S \$299.95 set

Armrest Bases

Chromed or black injection molded plastic like originals.



- 64-66 .. Mustang with standard interior (use 2) (chrome)
 3020-923-64 \$5.95 ea
 71-73 .. Mustang (use 2) (black) 3023-923-71 \$14.95 ea

Armrest Pads

Correct color and grain vinyl wrapped around a steel base molded in foam like original.



- 64-66 .. Mustang with standard interior (use 2)
 Black 3020-924-641 \$9.95 ea
 '64-65 Medium Blue 3020-924-642 \$9.95 ea
 '64-65 Bright Red 3020-924-643 \$9.95 ea
 '64-65 White 3020-924-644 \$9.95 ea
 '64-65 Palomino 3020-924-645 \$9.95 ea
 '64-65 Ivy Gold 3020-924-646 \$9.95 ea
 '66 Dark Red 3020-924-661 \$9.95 ea
 '66 Aqua 3020-924-662 \$9.95 ea
 '66 Parchment 3020-924-663 \$9.95 ea
 '66 Light Blue 3020-924-664 \$9.95 ea



- 67 .. Mustang with standard interior (use 2)
 Black 3021-924-671 \$14.95 ea
 Red 3021-924-672 \$14.95 ea
 Blue 3021-924-673 \$14.95 ea
 Parchment 3021-924-674 \$14.95 ea
 Saddle 3021-924-675 \$14.95 ea
 Aqua 3021-924-676 \$14.95 ea
 Ivy Gold 3021-924-677 \$14.95 ea



- 68 .. Mustang with standard interior, Left / Right
 Black 3021-924-681L / R ... \$19.95 ea
 Maroon 3021-924-682L / R ... \$19.95 ea
 Dark Blue 3021-924-683L / R ... \$19.95 ea
 Parchment 3021-924-684L / R ... \$19.95 ea
 Saddle 3021-924-685L / R ... \$19.95 ea
 Dark Aqua 3021-924-686L / R ... \$19.95 ea
 Ivy Gold 3021-924-687L / R ... \$19.95 ea



- 69-70 .. Mustang with standard interior, Left / Right
 Black 3022-924-691L / R ... \$24.95 ea
 Dark Red 3022-924-692L / R ... \$24.95 ea
 Blue 3022-924-693L / R ... \$24.95 ea
 Parchment 3022-924-696L / R ... \$24.95 ea
 Dark Aqua 3022-924-697L / R ... \$24.95 ea



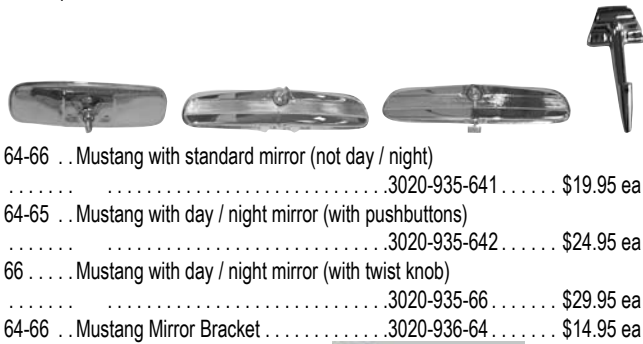
- 71-73 .. Mustang with standard interior, Left / Right
 Black 3023-924-711L / R ... \$24.95 ea
 Blue 3023-924-712L / R ... \$24.95 ea
 Parchment 3023-924-713L / R ... \$24.95 ea
 Dark Aqua 3023-924-714L / R ... \$24.95 ea
 Dark Red 3023-924-715L / R ... \$24.95 ea
 White 3023-924-716L / R ... \$24.95 ea
 Ginger 3023-924-717L / R ... \$24.95 ea

/ Cougar



Inside Rear View Mirrors and Brackets

New reproduction chrome mirrors and brackets for the inside rear view mirrors.



- 64-66 .. Mustang with standard mirror (not day / night) 3020-935-641 \$19.95 ea
- 64-65 .. Mustang with day / night mirror (with pushbuttons) 3020-935-642 \$24.95 ea
- 66 .. Mustang with day / night mirror (with twist knob) 3020-935-66 \$29.95 ea
- 64-66 .. Mustang Mirror Bracket 3020-936-64 \$14.95 ea



- 67 .. Mustang / Cougar Black Mirror 3021-935-67 \$24.95 ea
- Mirror Bracket 3021-936-67 \$14.95 ea



- 68-69 .. Mustang / Cougar Black Mirror 3021-935-68 \$29.95 ea
- Mirror Bracket (ball type)(2-pieces) 3021-936-68S \$14.95 ea



- 70-71 .. Mustang / Cougar Black Mirror 3022-935-70 \$34.95 ea
- 70-73 .. Mustang / Cougar Mirror Bracket 3022-936-70 \$3.95 ea

Sunvisors and Brackets

New reproduction chrome swivels and rods to replace pitted or missing originals.



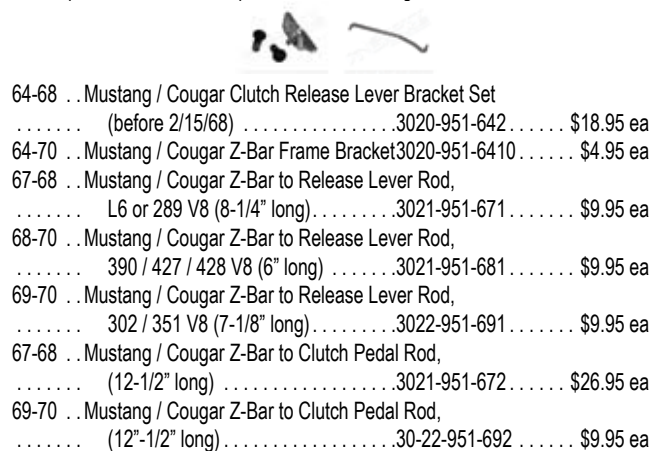
- 64-66 .. Mustang Swivel and Rod 3020-941-641 \$14.95 ea
- Coupe / Fastback (use 2) 3020-941-642P \$59.95 pr
- Convertible Brackets (pair) 3020-941-643S \$12.95 set
- Convertible Rods (set of 4)



- 67-70 .. Mustang Swivel and Rod 3021-941-671 \$14.95 ea
- Coupe / Fastback (use 2) 3021-941-672S \$79.95 set
- '67-68 Convertible Bracket and Rod Set 3021-941-672S \$79.95 set
- '68-70 Center Bracket (black) 3021-941-681 \$19.95 ea
- '68 Coupe / Fastback 3021-941-681 \$19.95 ea
- '69-70 all 3022-941-691 \$19.95 ea

Clutch Parts

New reproduction items to replace the clutch linkage.

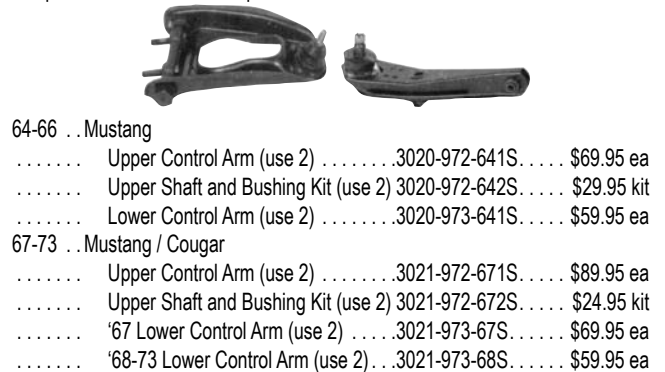


- 64-68 .. Mustang / Cougar Clutch Release Lever Bracket Set (before 2/15/68) 3020-951-642 \$18.95 ea
- 64-70 .. Mustang / Cougar Z-Bar Frame Bracket 3020-951-6410 \$4.95 ea
- 67-68 .. Mustang / Cougar Z-Bar to Release Lever Rod, L6 or 289 V8 (8-1/4" long) 3021-951-671 \$9.95 ea
- 68-70 .. Mustang / Cougar Z-Bar to Release Lever Rod, 390 / 427 / 428 V8 (6" long) 3021-951-681 \$9.95 ea
- 69-70 .. Mustang / Cougar Z-Bar to Release Lever Rod, 302 / 351 V8 (7-1/8" long) 3022-951-691 \$9.95 ea
- 67-68 .. Mustang / Cougar Z-Bar to Clutch Pedal Rod, (12-1/2" long) 3021-951-672 \$26.95 ea
- 69-70 .. Mustang / Cougar Z-Bar to Clutch Pedal Rod, (12"-1/2" long) 30-22-951-692 \$9.95 ea

SUSPENSION AND STEERING

Front Control Arms

Brand new stamped steel control arms come with ball joints riveted on, bushings and shafts pressed in, and are ready to install. Why bother rebuilding old worn components when these new parts are so affordable?



- 64-66 .. Mustang 3020-972-641S \$69.95 ea
- Upper Control Arm (use 2) 3020-972-642S \$29.95 kit
- Upper Shaft and Bushing Kit (use 2) 3020-973-641S \$59.95 ea
- Lower Control Arm (use 2) 3021-972-671S \$89.95 ea
- 67-73 .. Mustang / Cougar 3021-972-672S \$24.95 kit
- Upper Control Arm (use 2) 3021-973-67S \$69.95 ea
- '67 Lower Control Arm (use 2) 3021-973-68S \$59.95 ea
- '68-73 Lower Control Arm (use 2)

Front Spring Seats and Suspension Components

Brand new stamped steel front coil spring seat and bushing and tie rod ends to replace worn originals.



- 64-73 .. Mustang / Cougar Front Coil Spring Seat and Bushing (use 2) 3020-972-643S \$27.95 ea
- 64-66 .. Mustang Tie Rod End (without PS) 3020-976-641 \$9.95 ea
- Inner (use 2) 3020-976-642 \$9.95 ea
- Outer (use 2) 3020-992-641S \$12.95 kit
- 64-70 .. Mustang / Cougar Power Steering Cylinder 3020-992-641S \$12.95 kit
- Boot / Bushing Kit



Mustang

WEATHERSTRIPPING

Hood to Cowl Seals

New rubber seals that seal the cowl or radiator support to the hood.



- 64-66 . . Mustang Hood to Cowl Seal3020-280-641 \$9.95 ea
- End Brackets and Screw Kit3020-280-642S \$9.95 kit
- 64-70 . . Mustang Radiator to Cowl Seal Kit3020-280-643S \$7.95 kit



- 67-68 . . Mustang / Cougar Hood to Cowl Seal3021-280-671 \$9.95 ea
- 69-70 . . Mustang / Cougar Hood to Cowl Seal3022-280-691 \$9.95 ea
- 71-73 . . Mustang Hood to Cowl Seal3023-280-711 \$9.95 ea

Steering Column Seals

New rubber seals replace the one where the steering column passes through the firewall.

(photo not available)

- 67-68 . . Mustang / Cougar3021-373-671S \$14.95 ea

Vent Window Weatherstripping

New reproduction rubber weatherstrips that seal the vent window on the door.



- 64-66 . . Mustang Vent Window Weatherstrip,
- Left / Right3020-418-641L / R . . \$17.95 ea
- Division Bar Weatherstrip (use 2)3020-418-642 \$9.95 ea
- Top Vent Window Seal, Left / Right3020-418-643L / R . . \$5.95 ea



- 67-68 . . Mustang / Cougar Vent Window Weatherstrip,
- Left / Right3021-418-671L / R . . \$14.95 ea
- Door Glass Run, Left / Right3021-418-672L / R . . \$34.95 ea
- Door Glass Run Weatherstrips (pair)3021-431-67P \$29.95 pr
- Vent Window to Door Seals (pair)3021-418-673P \$6.95 pr

Windowfelt Kits

Complete set of inner and outer door and quarter glass windowfelts for most popular models. These are the strips that seal against the door and quarter glass and keep water out of the doors and quarters. Also commonly known as "window sweepers".



- 64-66 . . Mustang Coupe / Convertible (8-piece)3020-423-64S \$79.95 kit
- 65-66 . . Mustang Fastback (4-piece)3020-423-65S \$59.95 kit
- 67-68 . . Mustang Coupe (8-piece)3021-423-671S \$74.95 kit
- 67-68 . . Mustang Fastback (4-piece)3021-423-672S \$59.95 kit
- 67-68 . . Mustang Convertible (8-piece)3021-423-673S \$74.95 kit
- 67-68 . . Cougar Coupe (8-piece)3321-423-67S \$79.95 kit
- 69-70 . . Mustang Coupe (8-piece)3022-423-691S \$89.95 kit
- 69-70 . . Mustang Fastback (8-piece)3022-423-692S \$59.95 kit
- 69-70 . . Mustang Convertible (8-piece)3022-423-693S \$89.95 kit
- 69-70 . . Cougar Coupe (8-piece)3322-423-691S \$69.95 kit
- 69-70 . . Cougar Convertible (8-piece)3322-423-692S \$69.95 kit
- 71-73 . . Mustang Coupe (8-piece)3023-423-711S \$89.95 kit
- 71-73 . . Mustang Fastback (8-piece)3023-423-712S \$89.95 kit
- 71-73 . . Mustang Convertible (8-piece)3023-423-713S \$89.95 kit

Door Weatherstrips

Pair of rubber weatherstrips that wrap around the bottom of each door to seal the door to the body. Be sure to also use our door glass end seals.



- 64-66 . . Mustang (pair)3020-425-64P \$19.95 pr
- 67-68 . . Mustang / Cougar (pair)3021-425-67P \$24.95 pr
- 69-70 . . Mustang / Cougar (pair)3022-425-69P \$39.95 pr
- 69-70 . . Door Bottom Seals (pair)3022-425-691P \$14.95 pr
- 71-73 . . Mustang / Cougar (pair)3023-425-71P \$59.95 pr

Door Glass End Seals

Pair of rubber seals that fit on the end of the door shell and seal the end of the door glass. Sold in matched pairs for one car.



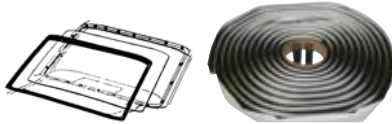
- 64-66 . . Mustang (pair)3020-427-64P \$9.95 pr
- 67 Mustang / Cougar (early) (pair)3021-427-671P \$19.95 pr
- 67-68 . . Mustang / Cougar (later) (pair)3021-427-672P \$10.95 pr
- 69-70 . . Mustang / Cougar (pair)3022-427-69P \$12.95 pr

/ Cougar



Front Windshield Gaskets

Rubber gasket that seals the front windshield of the car. For later models that don't use a gasket, we offer the correct 3/8" thick caulk material to seal the glass to the window channel.



- 64-66 . . Mustang Windshield Gasket 3020-535-64 \$25.95 ea
- 67-73 . . Mustang / Cougar Windshield Seal Kit .4030-535-641S. \$19.95 kit

Rear Window Gaskets

Rubber gasket that seals the rear window of the car.



- 64-68 . . Mustang Coupe 3020-718-64 \$29.95 ea
- 65-66 . . Mustang Fastback 3020-718-65 \$29.95 ea
- 67-68 . . Mustang Fastback 3021-718-67 \$29.95 ea
- 67-68 . . Cougar 3321-718-67 \$37.95 ea



- 69-70 . . Mustang Coupe 3022-718-691 \$39.95 ea
- 69-70 . . Mustang Fastback 3022-718-692 \$39.95 ea
- 69-70 . . Cougar Coupe 3322-718-69 \$37.95 ea
- 71-73 . . Mustang Coupe 3023-718-711 \$39.95 ea
- 71-73 . . Mustang Fastback 3023-718-712 \$39.95 ea

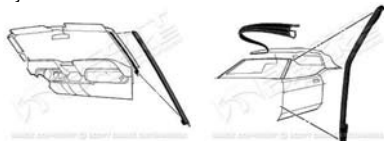
Convertible Top Seal Kits

Complete kit with all the weatherstripping for the convertible top frame.

- 64-66 . . Mustang 3020-902-64S. \$99.95 kit
- 69-70 . . Mustang / Cougar 3022-902-69S. \$164.95 kit
- 71-73 . . Mustang / Cougar 3023-902-71S. \$229.95 kit

Convertible Windshield Pillar Post Weatherstrips

Brand new rubber seals that cover the windshield pillar on convertible models. These are not included in a convertible top frame weatherstrip kit and need to be ordered separately.



- 64-68 . . Mustang (pair) 3020-536-64P \$24.95 pr
- 69-70 . . Mustang / Cougar, Left / Right 3022-536-69L / R \$149.95 ea
- 71-73 . . Mustang / Cougar (pair) 3023-536-71P \$84.95 pr

Roofrail Weatherstrips

Brand new rubber seals that seal the roofline on coupe or fastback models. Sold as a pair for one car.



- 64-66 . . Mustang Coupe, 67-68 Cougar (pair) . . 3020-537-64P \$29.95 pr
- 65-66 . . Mustang Fastback (pair) 3020-537-65P \$49.95 pr
- 67-68 . . Mustang Coupe (pair) 3021-537-671P \$29.95 pr
- 67-68 . . Mustang Fastback (pair) 3021-537-672P \$59.95 pr



- 69-70 . . Mustang / Cougar Coupe (pair) 3022-537-691P \$59.95 pr
- 69-70 . . Mustang Fastback (pair) 3022-537-692P \$99.95 pr
- 71-73 . . Mustang Coupe (pair) 3023-537-711P \$64.95 pr

Quarter Panel Drain Plugs

New reproduction rubber plugs that plug the bottom drain holes behind the quarter panel. Sold in pairs for one car.



- 64-66 . . Mustang (pair) 3020-612-642P \$5.95 pr
- 67-68 . . Mustang / Cougar, 71-73 Cougar (pair) 3021-612-673P \$12.95 pr

Door Jamb "U"-Seals

New reproduction rubber seals that seal the front of the quarter glass in the door jamb. Sold in pairs for one car.



- 64-66 . . Mustang (pair) 3020-612-641P \$12.95 pr
- 67-68 . . Mustang / Cougar Coupe / Convertible (pair) 3021-612-671P \$12.95 pr
- 69-70 . . Mustang / Cougar Coupe / Convertible (pair) 3022-612-691P \$22.95 pr
- 69-70 . . Mustang Fastback (pair) 3022-612-692P \$19.95 pr
- 71-73 . . Mustang / Cougar (pair) 3023-612-711P \$19.95 pr



Mustang

Quarter Glass Weatherstrips

New reproduction rubber seals that seal the front of the quarter glass in the door jamb. Sold in pairs for one car.



- 64-66 . . Mustang Coupe, Left / Right3020-664-641L / R . . \$9.95 ea
- 64-68 . . Mustang Convertible, Left / Right3020-664-642L / R . . \$9.95 ea
- 67-68 . . Mustang Coupe, Left / Right3021-664-671L / R . . \$24.95 ea



- 69-70 . . Mustang Coupe / Convertible, Left / Right3022-664-691L / R . . \$16.95 ea
- 69-70 . . Mustang Fastback (pair) (on 1/4 glass) 3022-664-692P \$29.95 pr
- 69-70 . . Mustang Fastback, Left / Right (on door glass)3022-664-693L / R . . \$17.95 ea



- 71-73 . . Mustang Coupe / Convertible, Left / Right3023-664-711L / R . . \$22.95 ea
- 71-73 . . Mustang Fastback, Left / Right3023-664-712L / R . . \$22.95 ea

Trunk Weatherstrips

New reproduction rubber seals that seal the trunk opening.



- 64-70 . . Mustang Coupe / Convertible3020-703-64 \$9.95 ea
- 65-66 . . Mustang Fastback3020-703-65 \$12.95 ea
- 67-68 . . Mustang Fastback3021-703-67 \$14.95 ea
- 67-70 . . Cougar3321-703-67 \$14.95 ea
- 69-70 . . Mustang Fastback3022-703-69 \$14.95 ea
- 69-70 . . Shelby GT Convertible3022-703-691 \$24.95 ea
- 71-73 . . Mustang / Cougar3023-703-71 \$19.95 ea



Paint Seal Kits

Kit includes hood bumpers, door bumpers, trunk bumpers, tail lamp and lens gaskets, door handle pads, backup lamp pads, parking lamp pads, cowl to hood seal, antenna pad, trunk housing pad and quarter cap seals.

- 64-66 . . Mustang3020-901-64S \$39.95 kit

Steel Cowl Induction Hoods



New aftermarket style cowl induction hood for late model Fox body Mustang.



- 87-93 . . Mustang 2" Cowl Induction Hood3020-901-64S \$429.95 ea

1 Cougar



Tips for Installing Sheetmetal

Here are some tips you can use to install your sheetmetal. Many times our parts are being installed by novice bodymen, who do not have a lot of experience in body repair. Some of the procedures required are somewhat difficult, and not for the novice to attempt without some training. If you don't know what you're doing, and you want to install a pair of quarter panels, please gain some knowledge first before attempting any major repair. Most of the customer service complaints or questions we get can be answered by using a little common sense and knowing something about body assembly and procedure.

1) **Professional installation is highly recommended!** If you don't know what you're doing, please don't attempt major bodywork! These parts are very expensive and hard to repair if you screw something up. We recommend using a qualified professional shop to install our products...they're not for the "do-it-yourselfer." Contact a local car club to see who they can recommend in your area, or look online for training videos on how to install sheetmetal. A good website is www.howtoasap.com.



2)**Always test fit and inspect parts before painting or installing!** Mocking up the parts or test fitting before installing is ALWAYS a good idea. Then, if there is a fit problem, it can be addressed before paint work had been started on the vehicle. By simply clamping parts together you can see how they are going to fit before any parts are painted or welded. Compare each part to the original to see the differences. Do you need to swap a bracket or drill a different hole? Now is the time to find out! Our parts are patterned after the factory service replacement parts, which may or may not be exactly identical to your original. Keep in mind that when these cars and trucks were built new, they did not have the strict production tolerances that are used now, and it takes a LOT of trial and error and time and effort to make all the gaps even for show quality. Keep in mind that what fits great on one car might not fit as well on another of the same model...that's just the way the vehicles were built originally! Even the factory had to fix cars on the production line that had substandard fit issues...so you may have to do some tweaking too.

3)**Never cut and weld on more than one section at a time!** Remember that when the vehicle was assembled in the factory, it was clamped together in giant jigs and fixtures to assure the body would be aligned with all parts fitting the factory pattern when it was welded together. Since you don't have access to those fixtures and jigs to maintain body alignment, NEVER work on more than one section or you can lose the factory alignment. If you chop the entire rear clip off at once to replace it, it is almost impossible to get each panel aligned so it will once again fit the rest of the car. Once you have "sprung" the body from the factory shape...you can almost count on it being ruined. In cases where we hear that "one side quarter fit great but the other side fit terrible" 99 times out of 100 it is because the body has sprung from factory specs because both quarters, trunk floor, and tail were whacked off together, leaving the floor pan and the roof swinging free in the breeze. The panels aren't wrong, but without a factory reference point to start with, it's very difficult to get the body back into proper shape. Also, if the car had major collision damage in the past that was repaired incorrectly, the body may be "tweaked" out of alignment which can throw the fit of your new panels off. ALWAYS leave a factory reference point and repair one panel at a time...that way the new panels will be put together as close as possible to the way the factory did it.

4) Always support the body so that proper alignment can be maintained during repair! Some customers call to complain about the fit of a door or quarter, then we find out the car is being supported on oil drums on all 4 corners and is literally folding in the middle...and the customer doesn't know why his door doesn't gap correctly! The best way to perform body repairs is to have the body on the ground, supported by the suspension and wheels. After the body has been repaired, then is the time to take the body off the frame and put it on a rotisserie so final detailing can be done and the frame detailed. NEVER cut on a body that is not supported properly or you will "spring" the body out of shape!

5) Sheetmetal is easily damaged, and small pecks and dings are considered "normal!" No one likes to receive a damaged part, and we do our best to package your parts so they will arrive to you undamaged. But small pecks and dings and ripples are part of the mass production stamping process and should be considered normal with any sheetmetal panel. If you want a "show quality" finish, you have to take the time to make each panel as perfect as possible. That is a step the factory never did when making your vehicle new. They were in a hurry making as many vehicles as they could produce, and cobbled them together and blew them out of the factory just as fast as they could...they were not "hand crafted" when new...don't expect replacement parts to be any different. The attention to detail that you perform during your restoration is the difference between a good driver and a "show" car. No credit will be issued for parts returned because of minor flaws and imperfections and are not considered "defects."

